



2019-2020

# DISTRICT CALENDAR

Plainview-Old Bethpage Central School District • [www.pobschools.org](http://www.pobschools.org) • 516.434.3000



## A Message From The Superintendent

It is with great expectations and optimism that I welcome you to the 2019-20 school year! Having been privileged to lead this District through a year where students pushed through all challenges to achieve accolades in all aspects of our programs, I am energized by the challenge of finding new pathways for preserving the distinguished tradition of excellence in our schools. Our theme for this year, "We Move Mountains", is intended to send the message that we will do all we can to accomplish the mission and goals of our District. Our students deserve our very best efforts.



In the fall, our 2019 graduates will be attending many of the most acclaimed colleges and universities in the nation. They confidently enter this next phase of their academic life having been supported by the talents and dedication of our staff, administration, Board of Education and the many wonderful families in this community.

We continue to update facilities through your support. We expect to complete renovations to the Plainview-Old Bethpage Middle School to accommodate the growing enrollment there. We are putting the finishing touches on the addition of classrooms at Old Bethpage Elementary, and soon we will begin window renovations at Stratford Road Elementary and POB JFK HS. Security has been made a priority in planning for this school year. We have updated our security process using a visitor management system. Security guards will be on duty in all schools throughout each weekday until 10pm when our buildings will close. Soon the vestibules, providing greater security to our buildings, will be installed.

Proudly, we welcome all community residents to share in the many fine student performances and programs offered in our schools and included here in our District calendar. I encourage you to continue to offer your suggestions and feedback as to how we can better accomplish the mission of the District. Log on to the District website at [www.pobschools.org](http://www.pobschools.org) to stay informed about Plainview-Old Bethpage Schools.

I extend sincere wishes to all who live in this outstanding community for a healthy, productive and rewarding school year! You may reach me at 516-434-3001 or e-mail me at [llewis@pobschools.org](mailto:llewis@pobschools.org).

Sincerely,  
Dr. Lorna R. Lewis, Superintendent of Schools

## Board of Education and Superintendent



### SEATED:

Ms. Jodi Keller, *Vice President*, Mrs. Debbie Bernstein, *President*, Dr. Lorna R. Lewis, *Superintendent*

### STANDING:

Mr. Seth Greenberg, *Trustee*, Mrs. Tara Rock, *Trustee*, Mrs. Lauren Sackstein, *Trustee*  
Mrs. Susan Stewart, *Trustee*, Mrs. Ginger Lieberman, *Trustee*

The Board of Education establishes policies and adopts regulations for the operation of the district's seven public schools. Its seven members serve without pay and are elected by the qualified voters of the district for a term of three years. Responsibility for administering Board policies is vested in the Superintendent.

The Board normally meets on the first and third Monday of each month at 7:45 pm in the Board Room at Howard B. Mattlin Middle School, B House, as designated in an advance schedule available to the public. All district residents are invited to attend and to participate in these meetings.

Board agendas and meeting minutes are available on the district website: [www.pobschools.org](http://www.pobschools.org)

Guercio & Guercio, Attorney     Jeanne Tyler, District Clerk

### BOARD MEETINGS ARE SCHEDULED FOR:

August 12; September 4, 16; October 7, 28; November 4, 18; December 2, 16;  
January 6, 27; February 10, 24; March 4, 16, 30; April 6, 20;  
May 11, 27; June 8, 22

All residents are encouraged to attend.



## Our School District

In 2019-2020, the Plainview-Old Bethpage Central School District will operate one high school, two middle schools and four elementary schools, with an approximate enrollment of 5020. Of the school system's employees, approximately 550 are professional staff, and 407 are support staff.

## Our Mission

To provide an academically challenging and stimulating environment for all students, and to enable them to realize their full potential to be happy, ethical and analytical citizens of the world. We do this by:

- making tolerance, acceptance, respect, honesty and kindness expectations for all students, and for members of the Plainview-Old Bethpage school community;
- identifying each student's academic, social-emotional, aesthetic and physical needs, and striving to meet those needs; and
- encouraging communications between and among students, teachers, parents, administrators and community members.

## Our Education Program

The Plainview-Old Bethpage educational program reflects the District's commitment to educating the whole child: academic, social, emotional, and physical. Our curricula is rigorous and relevant, engaging students in meaningful learning and experiences that connect them to world outside of the Plainview-Old Bethpage borders. With a focus on individual learning paths, we have developed special programs that meet the needs of each student.

A survey of our program reveals our attention to the social emotional well-being of our students which is aligned with our mission to create an inclusive learning environment. All of our schools are designated as "No Place for Hate" schools. Also, the *Leader in Me* work in our middle schools has provided a framework and philosophy to develop students who can "live by design, not default." This attention to the development of the whole child permits our students to access the academic program that goes beyond the basic requirements. Our K-8 program includes: STEAM and Discovery Lab experiences, coding, World Languages, and robust music and visual art opportunities. Our high school program allows students to follow unique paths that include Advanced Placement and college-bearing courses, vocational studies, business experiences, life skills, and exceptional music, theatre, physical education, and art courses. Our academic program, along with the outstanding extra and co-curricular opportunities, provide our students with a fulfilling educational experience. As a result, the majority of our students graduate with Advanced Regents diplomas and move on to select, four-year colleges.

The District's investment in the professional growth of our teachers and administrators ensures students are working with talented and knowledgeable professionals. Our staff's participation in professional organizations, along with their advanced degrees, allows Plainview-Old Bethpage to be held in high regard among other school districts.

## Our Budget

The school budget is reviewed and approved by the Board of Education, and submitted to district voters after public hearings. Qualifications for voting and registration are made public in advance through school district publications distributed to all residents. Our Budget Vote will take place on May 19, 2020. Any questions regarding our budget should be directed to Mr. Richard Cunningham at (516) 434-3050.

## Calendar Index

Administrative Offices.....	38	Our Radio Station .....	35
Adult Education Program .....	34	Our School District .....	3
Annual Asbestos Notification.....	33	Parent-Teacher Organizations.....	35
Art Education .....	34	Parking on School Grounds.....	33
Athletic Booster Club.....	35	PE, Health, Athletics and Recreation .....	35
Attendance Policy .....	29	Pesticide Notification .....	33
Board of Education and Superintendent .....	2	Photographs .....	35
Board of Education Meeting Dates.....	2	POB Public Library .....	36
Bus Transportation .....	26	Privately Conducted Activities, Trips and College Tours.....	33
Cafeteria.....	30	Prohibited Student Conduct.....	28
Chain of Communication.....	37	Project Challenge.....	34
Child Abuse and Maltreatment.....	32	Project Challenge Parent Association .....	34
Child Care Program.....	30	PTA Council Executive Board, 2019-2020 .....	36
Child Find Statement .....	32	PTA Unit Presidents, 2019-2020.....	36
Class Assignments and Testing on Religious Holidays .....	30	Public Conduct on School Property.....	28
Code of Conduct .....	26	Pupil Personnel Services.....	33
Communicating with Parents .....	29	Questions and Concerns .....	36
Community Organizations.....	36	Religious Holidays .....	39
Dangerous Instruments and Weapons in School .....	30	Reporting Violations .....	28
Delayed School Openings .....	38	School Hours .....	38
Disciplinary Consequences.....	28	Senior Citizens .....	35
Discipline of Students with Disabilities.....	28	Statement on Sexual Harassment .....	31
District Directory.....	38	Student Activities .....	26
District Publications.....	35	Student Dress Code .....	27
Emergency Procedures .....	30	Student Registration.....	26
Emergency School Closings .....	38	Students Rights.....	27
Every Student Succeeds Act (ESSA).....	33	Students' Record Policy .....	26
Half-Day Program .....	30	Substance Use/Abuse Policy.....	31
Health Services and Guidelines.....	32	The 6-Day Cycle.....	4
Holocaust/Genocide Studies Center.....	35	Title IX Committee Mission Statement .....	32
Music Booster Club MAPOB .....	34	Use of School Building and Grounds.....	32
Music Education.....	34	Visitors to the Schools.....	28
Non-Discrimination Regulations .....	31	Vocational Education.....	34
Our Budget.....	3	Voter Qualifications.....	33
Our Education Program.....	3	Working Papers .....	33
Our Mission.....	3		



# August 2019

MONDAY	TUESDAY	WEDNESDAY	THURSDAY	FRIDAY
<b>12</b> Board of Ed. Mtg. 7:45pm	<b>13</b>	<b>14</b> TRANSPORTATION PORTAL DAY	<b>15</b> Adult Ed. Open Reg. 6:30-8:30pm @ POBMS	<b>16</b>
HS SUMMER CHOIR CLINIC				
SCHOOL CLOSED	SCHOOL CLOSED	SCHOOL CLOSED	SCHOOL CLOSED	SCHOOL CLOSED
<b>19</b> V/JV Football Begins V/JV Football Only - Clearances, 7:45-11am; Physicals, 9-10am @ HS	<b>20</b> V/JV All Athletes; Clearances, 8-11am - Physicals, 9-10am @ HS	<b>21</b> PORTAL DAY V/JV All Athletes - Clearances, 7:30-11am @ HS Kindergarten Tea, 6:30pm @ JJP	<b>22</b>	<b>23</b>
HS ORCHESTRA STRING CAMP, 4-9:30PM				
HS SUMMER CHOIR CLINIC				
SCHOOL CLOSED	SCHOOL CLOSED	SCHOOL CLOSED	SCHOOL CLOSED	SCHOOL CLOSED
<b>26</b> V/JV All Athletes - Clearances, 7:30-11am; Physicals, 9-10am @ HS V/JV Fall Sports Begins	<b>27</b> HS Gr. 12 Operation Apply, 8am MMS/POBMS Gr. 7/8 Locker Move-In. 9am-12pm	<b>28</b> POBMS Gr. 5 Orientation, 8am MMS/POBMS Gr. 5/6 Locker Move-In. 9am-12pm	<b>29</b> MMS Sports - Clearances, 12-2pm; Physicals, 12:45-1:15pm POBMS Sports - Clearances, 1-3pm; Physicals, 1:30-2pm	<b>30</b> HS Gr. 9 Orientation, 10am
HS YEARBOOK PORTRAITS				
SCHOOL CLOSED	SCHOOL CLOSED	SCHOOL CLOSED	SCHOOL CLOSED	SCHOOL CLOSED



## The 6-Day Cycle

Our elementary schools operate on a 6-day cycle for "specials." This means that your child will attend art, music, library, language, and physical education classes once (except for physical education which meets twice) every 6 days. For example, your child's schedule might look like this:

- Day 1 – art
- Day 2 – library
- Day 3 – physical education
- Day 4 – music
- Day 5 – language
- Day 6 – physical education

The schedule of days is noted on this calendar.


**September 4<sup>th</sup> is Day 1**, September 5th is Day 2, etc. Only days in which school is in session are so designated. If schools are closed because of snow, the days will continue as printed in the calendar. For example, if schools are closed for snow on Day 3, when school resumes the next day, it will be Day 4. The Make-up snow day would be Day 3.

# September 2019

"Don't prepare students for something, prepare them for anything." –Eric Sheninger

SUNDAY	MONDAY	TUESDAY	WEDNESDAY	THURSDAY	FRIDAY	SATURDAY
<b>1</b>	<b>2</b> <sup>®</sup>	<b>3</b> SUPERINTENDENT'S CONFERENCE DAY	<b>4</b> DAY 1	<b>5</b> DAY 2	<b>6</b> DAY 3	<b>7</b>
	SCHOOL CLOSED	SCHOOL CLOSED	K-12 First Day of School HS Safe Teen Driving, 6:30pm Board of Ed. Mtg. 7:45pm	MS Fall Sports Begin HS Freshman Welcome, pd.10 MMS Sports - Physicals, 2:45-3:10pm POBMS Sports - Physicals, 3:20-3:45pm HS Gr. 12 Guidance Info Night, 7pm	HS Senior BBQ OB Movie on the Lawn (Rain Date 9/13) PAS Back to School Picnic, 5:30-7:30pm (Rain Date 9/13)	



8	9 DAY 4 (R) Arts in Ed. Mtg. 9:30am SEPTA, 7:30pm @ POBMS	10 DAY 5 (R) PTA Pres/Supt. Mtg., 9:30am ELEM. Back to School Night; (K, 6-6:30pm; Gr. 1, 6:30-7; Gr. 2, 7-7:30; Gr. 3, 7:30-8; Gr. 4, 8-8:30)	11 DAY 6	12 DAY 1 HS Safe Teen Driving, 6:30pm MMS/POBMS Gr. 5 1:1 Parent Mtg. 6:30; Gr. 5/6 Back to School Night, 7pm <b>HS PICTURE DAYS</b>	13 DAY 2 MMS Gr. 5 BBQ	14 ACT Away
15 POB Heart Walk	16 DAY 3 Board of Ed. Mtg. 7:45pm	17 DAY 4 HS Deadline to drop a class to add lunch (Gr. 9-12) HS Gr. 9 Independent Research Parent Mtg. 6:30pm HS Back to School Night, 7pm	18 DAY 5 SR PTA, 9:30am POB ENL Parent Tea, 7pm @ HS POB Athletic Booster Club Mtg. 7:30pm @ HS OB PTA, 7:30pm	19 DAY 6 HS Gr. 12 Operation Apply MMS/POBMS Club Fair, Pd. 9 JJP/PAS PTA, 9:30am MMS/POBMS Gr. 7/8 Back to School Night, 7pm	20 DAY 1 JJP Welcome Back Color Run, 5:45pm SR Spirit Social, 6:30pm	21
22	23 DAY 2 Adult Ed. Fall Classes Begin HS PTA, 7:30pm	24 DAY 3 HS Deadline to drop a class to add another (Gr. 9-12) HS Sr. Bleacher Photo, 1:49pm MMS/POBMS PTA, 7:30pm	25 DAY 4 HS PTA Curriculum, 9:45am @ BOE Room PTA Council, 7:30pm @ HS	26 DAY 5 Security/Trans. Committee, 9:30am HS Club Fair, pd. 10 & 11 Audit Committee Mtg. 7pm @ BOE HS Financial Aid Night, 7pm	27 DAY 6	28
29 (R)	30 (R) SCHOOL CLOSED				AUGUST 2019 S M T W T F S 1 2 3 4 5 6 7 8 9 10 11 12 13 14 15 16 17 18 19 20 21 22 23 24 25 26 27 28 29 30 31	OCTOBER 2019 S M T W T F S 1 2 3 4 5 6 7 8 9 10 11 12 13 14 15 16 17 18 19 20 21 22 23 24 25 26 27 28 29 30 31

# SEPTEMBER 2019

ABBREVIATIONS USED  
IN THIS PUBLICATION

Plainview-Old Bethpage John F. Kennedy HS  
Howard B. Mattlin Middle School  
Plainview-Old Bethpage Middle School  
Old Bethpage Elementary School

HS  
MMS  
POBMS  
OB

Judy Jacobs-Parkway Elementary School  
Pasadena Elementary School  
Stratford Road Elementary School  
Religious Holiday

JJP  
PAS  
SR  
(R)



# October 2019

*"Education is our passport to the future, for tomorrow belongs to the people who prepare for it today."*  
 -Malcolm X



SUNDAY	MONDAY	TUESDAY	WEDNESDAY	THURSDAY	FRIDAY	SATURDAY
		1 <span style="float: right;">®</span>  SCHOOL CLOSED	2 DAY 1  Athletic Council Mtg, 9am @ HS MS PTA Curriculum, 9:45am @ BOE Room SEPTA, 7:30pm @ POBMS	3 DAY 2  Nutrition Committee, 9:30am @ HS Health/Safety Committee, 4pm HS DECA Installation, 7pm POB K Literacy & Math Night, 7pm @ PAS	4 DAY 3	5  SAT @ POBJFK



6	7 DAY 4 Arts in Ed. Mtg. 9:30am Board of Ed. Mtg. 7:45pm	8 DAY 5 (R)	9 (R) SCHOOL CLOSED	10 DAY 6 ELEM. PTA Curriculum, 9:45am @ MMS HS Parent/Teacher Conf. Afternoon & Evening, A-K	11 DAY 1 HS Deadline to drop a class or to level change (Gr. 10-12) JJP Fall Festival	12																																																																																																			
13 (R)	14 (R) SCHOOL CLOSED	15 DAY 2 (R) PTA Pres/Supt. Mtg., 9:30am HS Parent/Teacher Conf. Afternoon & Evening, L-Z	16 DAY 3 (R) Gr. 5-12 Progress Reports Posted  Dr. Dewey: The Science of Drugs, Addictions and the Brain, 7pm @ HS PSAT @ POBJFK MMS Picture Day, Gr. 5 & 6 SR PTA, 7:30pm	17 DAY 4 (R) MMS Picture Day, Gr. 7 & 8 OB PTA, 9:30am HS WL Honor Society Induction, 3pm MMS/POBMS PTA, 7:30pm	18 DAY 5 (R) MMS PRIDE PEP Rally HS POB Challenge HS Gr. 12 Cap & Gown Orders, 9am-1pm SR Fall Festival, 6:30pm	19 (R)																																																																																																			
20 (R)	21 DAY 6 (R) BOE/PTA Council Meet the Legislative Candidates Night @ POBMS HS Deadline to drop a class or to level change (Gr. 9) HS Picture Day Make-Up MMS/POBMS Gr. 5-8 Parent EdTech Bootcamp, 7pm @ POBMS	22 DAY 1 (R) HS Parent/Teacher Conf. Make-Up Date HS Gr. 10 Guidance Info Night, 7pm PAS PTA, 7:30PM	23 DAY 2 MMS/POBMS Gr. 5-8 Parent/Teacher Conf. Afternoon & Evening, A-K POB Athletic Booster Club Mtg. 7:30pm @ HS	24 DAY 3 OB Shop & Mingle SR Picture Day Title IX Meeting, 1:30pm @ HS HS PTA, 7:30pm	25 DAY 4 OB Picture Day HS PEP Rally MMS PRIDE Day POBMS PEP Rally POB Pathways to Peace Celebration, 7pm @ POBMS	26 ACT-Away Homecoming Game, 3pm @ HS																																																																																																			
POB Jones Beach Breast Cancer Walk		MMS/POBMS BOOK FAIR				HOMECOMING WEEK / SPIRIT WEEK																																																																																																			
27 (R)	28 DAY 5 JJP Picture Day/Gr. 4 Panoramic PAS Fall Picture Day HS PTA Curriculum, 1:45pm @ BOE Room Board of Ed. Mtg. 7:45pm	29 DAY 6 PAS Gr 4. Panoramic PTA Council, 7:30 @ MMS	30 DAY 1 MMS/POBMS Gr. 5-8 Parent/Teacher Conf. Afternoon & Evening, L-Z	31 DAY 2 POB Family Night	<table border="1"> <thead> <tr> <th colspan="7">SEPTEMBER 2019</th> <th colspan="7">NOVEMBER 2019</th> </tr> <tr> <th>S</th><th>M</th><th>T</th><th>W</th><th>T</th><th>F</th><th>S</th> <th>S</th><th>M</th><th>T</th><th>W</th><th>T</th><th>F</th><th>S</th> </tr> </thead> <tbody> <tr> <td></td><td>1</td><td>2</td><td>3</td><td>4</td><td>5</td><td>6</td><td>7</td> <td></td><td></td><td></td><td></td><td></td><td>1</td><td>2</td> </tr> <tr> <td>8</td><td>9</td><td>10</td><td>11</td><td>12</td><td>13</td><td>14</td> <td>3</td><td>4</td><td>5</td><td>6</td><td>7</td><td>8</td><td>9</td> </tr> <tr> <td>15</td><td>16</td><td>17</td><td>18</td><td>19</td><td>20</td><td>21</td> <td>10</td><td>11</td><td>12</td><td>13</td><td>14</td><td>15</td><td>16</td> </tr> <tr> <td>22</td><td>23</td><td>24</td><td>25</td><td>26</td><td>27</td><td>28</td> <td>17</td><td>18</td><td>19</td><td>20</td><td>21</td><td>22</td><td>23</td> </tr> <tr> <td>29</td><td>30</td><td></td><td></td><td></td><td></td><td></td> <td>24</td><td>25</td><td>26</td><td>27</td><td>28</td><td>29</td><td>30</td> </tr> </tbody> </table>		SEPTEMBER 2019							NOVEMBER 2019							S	M	T	W	T	F	S	S	M	T	W	T	F	S		1	2	3	4	5	6	7						1	2	8	9	10	11	12	13	14	3	4	5	6	7	8	9	15	16	17	18	19	20	21	10	11	12	13	14	15	16	22	23	24	25	26	27	28	17	18	19	20	21	22	23	29	30						24	25	26	27	28	29	30
SEPTEMBER 2019							NOVEMBER 2019																																																																																																		
S	M	T	W	T	F	S	S	M	T	W	T	F	S																																																																																												
	1	2	3	4	5	6	7						1	2																																																																																											
8	9	10	11	12	13	14	3	4	5	6	7	8	9																																																																																												
15	16	17	18	19	20	21	10	11	12	13	14	15	16																																																																																												
22	23	24	25	26	27	28	17	18	19	20	21	22	23																																																																																												
29	30						24	25	26	27	28	29	30																																																																																												
HS YEARBOOK PORTRAIT MAKEUP		COACHES VS. CANCER WEEK																																																																																																							

# OCTOBER 2019

ABBREVIATIONS USED  
IN THIS PUBLICATION

Plainview-Old Bethpage John F. Kennedy HS  
Howard B. Mattlin Middle School  
Plainview-Old Bethpage Middle School  
Old Bethpage Elementary School

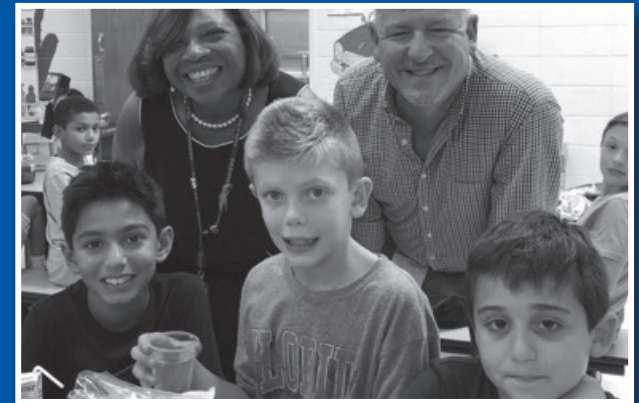
HS  
MMS  
POBMS  
OB

Judy Jacobs-Parkway Elementary School  
Pasadena Elementary School  
Stratford Road Elementary School  
Religious Holiday

JJP  
PAS  
SR  
(R)

# November 2019

*"Education is what survives when what has been learned has been forgotten." –BF Skinner*



SUNDAY	MONDAY	TUESDAY	WEDNESDAY	THURSDAY	FRIDAY	SATURDAY
OCTOBER 2019	DECEMBER 2019				1 DAY 3 (R)	2 (R)
S M T W T F S	S M T W T F S					
1 2 3 4 5	1 2 3 4 5 6 7					
6 7 8 9 10 11 12	8 9 10 11 12 13 14					
13 14 15 16 17 18 19	15 16 17 18 19 20 21					
20 21 22 23 24 25 26	22 23 24 25 26 27 28					
27 28 29 30 31	29 30 31					
					MMS Talent Show, 7pm Coaches vs. Cancer Game, 7pm @ HS	SAT-Away



3	4 DAY 4 Arts in Ed. Mtg. 9:30am HS Kickball Tournament, 2:30pm (Rain Date 11/6) Board of Ed. Mtg. 7:45pm	5 SUPERINTENDENT'S CONFERENCE DAY ELECTION DAY SCHOOL CLOSED	6 DAY 5 Nutrition Committee, 9:30am @ MMS MMS/POBMS Winter 1 Sports Info. Mtgs. 3pm HS Gr. 11 Guidance Info Night, 7pm	7 DAY 6 PTA Council Event Security/Trans. Committee, 9:30am	8 DAY 1 OB Fall Festival MMS/POBMS Financial Literacy Day	9 (R)
10	11 SCHOOL CLOSED	12 DAY 2 Gr. 5-12 Marking Period Ends MS Winter 1 Sports Begin V/JV Wrestling Begins MMS/POBMS Gr. 5-8 Parent/Teacher Conf. Make-Up Date PTA Pres/Supt. Mtg., 9:30am Audit Committee Mtg. 7pm @ BOE HS PTA, 7:30pm	13 DAY 3 Gr. 5-12 Marking Period Begins MS PTA Curriculum, 9:45am @ BOE Room Winter Coaches Mtg. 3:45pm @ HS SR Gr. 4 Night Out POB Athletic Booster Club Mtg. 7:30pm @ HS MMS/POBMS PTA, 7:30pm	14 DAY 4 JJP/OB/PAS PTA, 9:30am Health/Safety Committee, 4pm SEPTA Night Out	15 DAY 5 POBMS Career Fair Health Advisory Committee, 12pm @ BOE HS POB Idol, 7pm	16
17	18 DAY 6 ELEM. Gr. K-4 Parent/Teacher Conf.- Morning V/JV Winter Sports Begin Board of Ed. Mtg. 7:45pm	19 DAY 1 SCHOOL CLOSED FOR K-4 STUDENTS ELEM. Gr. K-4 Parent/Teacher Conf.- Full Day POB Engineering Awareness Night @ HS, 6:30pm	20 DAY 2 Gr. 5-12 Report Cards Posted Athletic Council Mtg, 9am @ HS SNAP Annual Benefit	21 DAY 3 OB Staff Appreciation ELEM. PTA Curriculum, 9:45am @ SR HS SADD Blood Drive ELEM. Gr. K-4 Parent/Teacher Conf.- Evening HS Fall Drama	22 DAY 4 HS Fall Drama	23
24	25 DAY 5 OB Picture Retake POBMS STREAM Day PTA Council, 7:30pm @ JJP	26 DAY 6 V/JV Fall Sports Awards Ceremony, 7pm @ HS SR PTA, 7:30pm	27 DAY 1	28 SCHOOL CLOSED	29 SCHOOL CLOSED	30

# NOVEMBER 2019

ABBREVIATIONS USED  
IN THIS PUBLICATION

Plainview-Old Bethpage John F. Kennedy HS  
Howard B. Mattlin Middle School  
Plainview-Old Bethpage Middle School  
Old Bethpage Elementary School

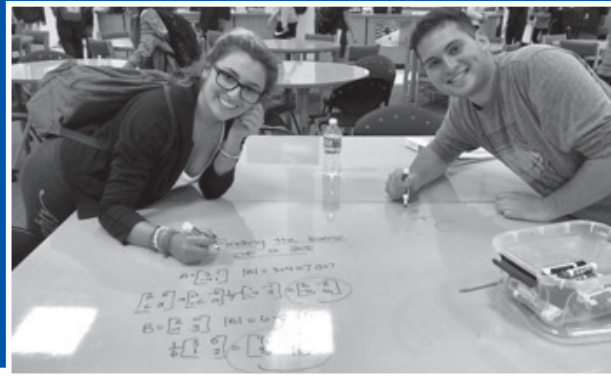
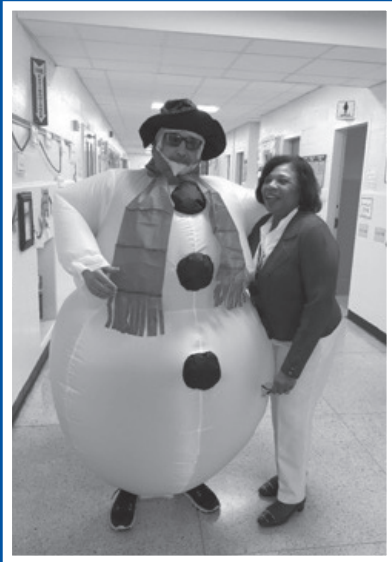
HS  
MMS  
POBMS  
OB

Judy Jacobs-Parkway Elementary School  
Pasadena Elementary School  
Stratford Road Elementary School  
Religious Holiday

JJP  
PAS  
SR  
(R)


# December 2019

*"Educating the mind without educating the heart is no education at all."—Aristotle*



SUNDAY	MONDAY	TUESDAY	WEDNESDAY	THURSDAY	FRIDAY	SATURDAY	
1	2	3	4	5	6	7	
(R)	DAY 2	DAY 3	DAY 4	DAY 5	DAY 6	(R)	
			Gr. K-4 End of Marking Period	Gr. K-4 Beginning of Marking Period			
		Nutrition Committee, 9:30am @ BOE POB Parent Academy @ MMS	JJP/MMS Picture Retake SR Picture Retake & Gr. 4 Class Picture SEPTA, 7:30pm @ POBMS	Security/Trans. Committee, 9:30am MMS Winter Concert, 7pm			
	Arts in Ed. Mtg. 9:30am Board of Ed. Mtg. 7:45pm	JJP/OB HOLIDAY BOUTIQUE				HS Broadway Cabaret Night, 7pm	SAT- Away
		PAS HOLIDAY BOUTIQUE				NYSSMA ALL-STATE FESTIVAL - ROCHESTER	



<b>8</b> (R)  HS DECA Regionals @ Freeport HS <b>NYSSMA ALL-STATE FESTIVAL -ROCHESTER</b>	<b>9</b> DAY 1  PAS Picture Retake HS PTA Curriculum, 9:45am @ BOE Room HS PTA, 7:30pm	<b>10</b> DAY 2  Gr. K-4 Report Cards Posted  PTA Pres/Supt. Mtg., 9:30am POB Athletic Booster Club Mtg. 7:30pm @ HS <b>SR HOLIDAY</b>	<b>11</b> DAY 3  POBMS Picture Retake JJP/OB Winter Concert, 10:30am HS Orchestra and Jazz Concert, 7:30pm <b>MMS HOLIDAY BOUTIQUE</b>	<b>12</b> DAY 4  PAS Winter Concert, 10:30am Title IX Meeting, 1:30pm @ HS Health/Safety Committee, 4pm MMS Winter Concert, 7pm <b>POP-UP (LUNCH PERIODS)</b>	<b>13</b> DAY 5  SR Winter Concert, 10:30am	<b>14</b>  ACT – Away HS METMUNC Conference, 8am-9pm																																																																																				
<b>15</b>	<b>16</b> DAY 6  Board of Ed. Mtg. 7:45pm	<b>17</b> DAY 1  MMS Winter Concert , 7pm POBMS Winter Concert, 7pm	<b>18</b> DAY 2  HS Senior Citizen Tea, 3pm PTA Council, 7:30pm @ PAS	<b>19</b> DAY 3  Gr. 5-12 Progress Reports Posted  HS Choral Concert, 7:30pm	<b>20</b> DAY 4	<b>21</b>																																																																																				
<b>22</b> (R)	<b>23</b> (R)  SCHOOL CLOSED	<b>24</b> (R)  SCHOOL CLOSED	<b>25</b> (R)  SCHOOL CLOSED	<b>26</b> (R)  SCHOOL CLOSED	<b>27</b> (R)  SCHOOL CLOSED	<b>28</b> (R)																																																																																				
<b>29</b> (R)	<b>30</b> (R)  SCHOOL CLOSED	<b>31</b>  SCHOOL CLOSED			NOVEMBER 2019 <table border="1"> <tr><td>S</td><td>M</td><td>T</td><td>W</td><td>T</td><td>F</td><td>S</td></tr> <tr><td></td><td></td><td></td><td></td><td></td><td>1</td><td>2</td></tr> <tr><td>3</td><td>4</td><td>5</td><td>6</td><td>7</td><td>8</td><td>9</td></tr> <tr><td>10</td><td>11</td><td>12</td><td>13</td><td>14</td><td>15</td><td>16</td></tr> <tr><td>17</td><td>18</td><td>19</td><td>20</td><td>21</td><td>22</td><td>23</td></tr> <tr><td>24</td><td>25</td><td>26</td><td>27</td><td>28</td><td>29</td><td>30</td></tr> </table>	S	M	T	W	T	F	S						1	2	3	4	5	6	7	8	9	10	11	12	13	14	15	16	17	18	19	20	21	22	23	24	25	26	27	28	29	30	JANUARY 2020 <table border="1"> <tr><td>S</td><td>M</td><td>T</td><td>W</td><td>T</td><td>F</td><td>S</td></tr> <tr><td></td><td></td><td></td><td>1</td><td>2</td><td>3</td><td>4</td></tr> <tr><td>5</td><td>6</td><td>7</td><td>8</td><td>9</td><td>10</td><td>11</td></tr> <tr><td>12</td><td>13</td><td>14</td><td>15</td><td>16</td><td>17</td><td>18</td></tr> <tr><td>19</td><td>20</td><td>21</td><td>22</td><td>23</td><td>24</td><td>25</td></tr> <tr><td>26</td><td>27</td><td>28</td><td>29</td><td>30</td><td>31</td><td></td></tr> </table>	S	M	T	W	T	F	S				1	2	3	4	5	6	7	8	9	10	11	12	13	14	15	16	17	18	19	20	21	22	23	24	25	26	27	28	29	30	31	
S	M	T	W	T	F	S																																																																																				
					1	2																																																																																				
3	4	5	6	7	8	9																																																																																				
10	11	12	13	14	15	16																																																																																				
17	18	19	20	21	22	23																																																																																				
24	25	26	27	28	29	30																																																																																				
S	M	T	W	T	F	S																																																																																				
			1	2	3	4																																																																																				
5	6	7	8	9	10	11																																																																																				
12	13	14	15	16	17	18																																																																																				
19	20	21	22	23	24	25																																																																																				
26	27	28	29	30	31																																																																																					

# DECEMBER 2019

ABBREVIATIONS USED  
IN THIS PUBLICATION

Plainview-Old Bethpage John F. Kennedy HS  
 Howard B. Mattlin Middle School  
 Plainview-Old Bethpage Middle School  
 Old Bethpage Elementary School

HS  
 MMS  
 POBMS  
 OB


Judy Jacobs-Parkway Elementary School  
 Pasadena Elementary School  
 Stratford Road Elementary School  
 Religious Holiday

JJP  
 PAS  
 SR  
 (R)

# January 2020

*"Knowledge will bring you the opportunity to make a difference." –Claire Fagin*



SUNDAY	MONDAY	TUESDAY	WEDNESDAY	THURSDAY	FRIDAY	SATURDAY
DECEMBER 2019	FEBRUARY 2020		1	2	3	4
S M T W T F S	S M T W T F S		SCHOOL CLOSED	DAY 5	DAY 6	
1 2 3 4 5 6 7						
8 9 10 11 12 13 14	2 3 4 5 6 7 8					
15 16 17 18 19 20 21	9 10 11 12 13 14 15					
22 23 24 25 26 27 28	16 17 18 19 20 21 22					
29 30 31	23 24 25 26 27 28 29				PAS Gr. 1 Night Out	



5	6 DAY 1 (R) Nutrition Committee, 9:30am @ OB Board of Ed. Mtg. 7:45pm	7 DAY 2 (R) All-County Music Festival Div. 1 East HS Incoming Gr. 9 Parent Orientation, 7pm	8 DAY 3 SR PTA, 9:30am MMS/POBMS Winter 2 Sports Info. Mtgs. 3pm Winter 2 Coaches Mtg, 3:45pm @ HS SEPTA, 7pm @ POBMS	9 DAY 4 ELEM. PTA Curriculum, 9:45am @ OB Adult Ed. Open Reg. 6:30-8:30pm @ POBMS HS Parents Night Out	10 DAY 5 HS Night of A Cappella, 6:30pm & 8:30pm	11
12	13 DAY 6 Arts in Ed. Mtg. 9:30am SAT & ACT: All You Need to Know, 7pm @ HS All-County Music Festival Div. 4	14 DAY 1 (R) PTA Pres/Supt. Mtg., 9:30am POB Athletic Booster Club Mtg. 7:30pm @ HS All-County Music Festival Div. 3/5	15 DAY 2 (R) Athletic Council Mtg, 9am @ HS MS PTA Curriculum, 9:45am @ BOE Room	16 DAY 3 Security/Trans. Committee, 9:30am MMS/POBMS PTA, 7:30pm All-County Music Festival Div. 4	17 DAY 4 Lunar New Year Celebration, 6pm @ SR All-County Music Festival Div. 3/5 All-County Div. 4 Concert @ Tilles Center	18 All-County Div.5 Vocal Concert @ Tilles All-County Div. 5 Instrumental Concert @ Tilles All-County Music Festival Div. 2/3
19	20 SCHOOL CLOSED	21 DAY 5 MS Winter 2 Sports Begin PAS PTA, 7:30pm	22 DAY 6 JJP PTA, 9:30am PTA Pres/Principal Dinner	23 DAY 1 Health/Safety Committee, 4pm HS PTA, 7:30pm	24 DAY 2 Gr. 5-12 Marking Period Ends  OB Talent Show	25 (R)
26	27 DAY 3 Gr. 5-12 Marking Period Begins  HS PTA Curriculum, 1:45pm @ BOE Room Board of Ed. Mtg. 7:45pm (Student Recognition Ceremony)	28 DAY 4 MMS/POBMS Incoming Gr. 8 Parent Transition Mtg, 7pm	29 DAY 5 PTA Council, 7:30pm @ SR	30 DAY 6 Title IX Meeting, 1:30pm @ HS OB PTA, 7:30pm	31 DAY 1 Gr. 5-12 Report Cards Posted  Health Advisory Committee, 12pm @ BOE	
HS REGENTS AND MID-YEAR EXAMS						
HS COLLEGE TOUR						
PAS PARP WEEK						
POBMS LITERACY WEEK						

# JANUARY 2020

ABBREVIATIONS USED  
IN THIS PUBLICATION

Plainview-Old Bethpage John F. Kennedy HS  
Howard B. Mattlin Middle School  
Plainview-Old Bethpage Middle School  
Old Bethpage Elementary School

HS  
MMS  
POBMS  
OB

Judy Jacobs-Parkway Elementary School  
Pasadena Elementary School  
Stratford Road Elementary School  
Religious Holiday

JJP  
PAS  
SR  
(R)





2	3 DAY 2 Arts in Ed. Mtg. 9:30am HS Research Parent Info Mtg. 7pm	4 DAY 3 SEPTA, 7:30pm @ POBMS	5 DAY 4 Spec. Ed. Parent Transition Mtg. @ POBMS; Gr. 4-5, 7pm; Gr. 8-9, 7:45pm Nutrition Committee, 9:30am @ POBMS	6 DAY 5 OB Sweetheart Dance POBMS Musical	7 DAY 6 POBMS Musical	8 ACT-Away POBMS Musical
JJP PARP WEEK						
SR KIDS HEART CHALLENGE WEEK						
9	10 DAY 1 JJP Kids Heart Challenge Week Kick-Off Board of Ed. Mtg. 7:45pm	11 DAY 2 PTA Pres/Supt. Mtg. 9:30am MMS/POBMS PTA, 7:30pm	12 DAY 3 HS Band Concert, 7:30pm	13 DAY 4 POB Athletic Booster Club Mtg. 7:30pm @ HS HS Band Concert (Snow Date)	14 DAY 5	15
OB SPIRIT WEEK						
16	17 SCHOOL CLOSED	18 SCHOOL CLOSED	19 SCHOOL CLOSED	20 SCHOOL CLOSED	21 SCHOOL CLOSED	22
23	24 DAY 6 Adult Ed. Spring Classes Begin Board of Ed. Mtg. 7:45pm (Budget Meeting #1)	25 DAY 1 PTA Council, 7:30pm @ OB	26 DAY 2 Athletic Council Mtg, 9am @ HS MAPOB Mtg., 7pm @ MMS	27 DAY 3 ELEM. PTA Curriculum, 9:45am @ JJP HS PTA, 7:30pm PAS Gr. 2 Night Out	28 DAY 4 SEPTA Family Night	29
NYS DECA COMPETITION						
SR PARP WEEK						

# FEBRUARY 2020

ABBREVIATIONS USED  
IN THIS PUBLICATION

Plainview-Old Bethpage John F. Kennedy HS  
Howard B. Mattlin Middle School  
Plainview-Old Bethpage Middle School  
Old Bethpage Elementary School

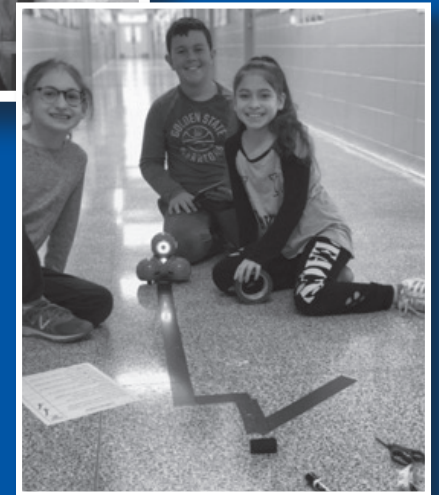
HS  
MMS  
POBMS  
OB

Judy Jacobs-Parkway Elementary School  
Pasadena Elementary School  
Stratford Road Elementary School  
Religious Holiday

JJP  
PAS  
SR  
Ⓡ

# March 2020

*"Education is not the learning of facts, but the training of the mind to think."*  
 -Albert Einstein



SUNDAY	MONDAY	TUESDAY	WEDNESDAY	THURSDAY	FRIDAY	SATURDAY
1	2 DAY 5	3 DAY 6	4 DAY 1	5 DAY 2	6 DAY 3	7
	MMS/POBMS Incoming Gr. 6 Parent Transition Mtg. 6:30pm; Gr. 7, 7:45pm	CPSE to CSE Parent transition Mtg. 6:30pm @ POBMS VJV Winter Sports Award Ceremony, 7pm @ HS SEPTA PTA, 7:30pm @ POBMS	Nutrition Committee, 9:30am @ SR Spring Coaches Mtg. 3:45pm @ HS Board of Ed. Mtg. 7:45pm (Budget Meeting #2)	POB Gr. 3 Exchange Concert, 9am @ POBMS Title IX Meeting, 1:30pm @ HS JJP/OB PTA, 7:30pm	Gr. 5-12 Progress Reports Posted  Arts in Ed. Mtg. 9:30am HS Battle of the Classes, 2:30pm	
			POBMS SPIRIT WEEK		NYSSMA PIANO FESTIVAL - NASSAU COMMUNITY COLLEGE	
			HS BATTLE WEEK			

8	9 DAY 4 (R) V/JV B/G Track, B/G Lacrosse, baseball, and Softball Begins	10 DAY 5 (R) MAPOB Instrument Petting Zoo @ POBMS PTA Pres/Supt. Mtg. 9:30am Audit Committee Mtg. 7pm @ BOE HS Gr. 11 College Rep Talk, 7pm	11 DAY 6 HS Tri-M Music Honor Society Induction Ceremony, 3pm PTA Founders Day, 6:15pm OB PARP WEEK	12 DAY 1 JJP/OB/PAS/SR Staff Appreciation ELEM. Gr. K-4 Parent/Teacher Conf.-Evening POB Athletic Booster Club Mtg. 7:30pm @ HS PAS BOOK FAIR OB / SR BOOK FAIR	13 DAY 2 HS SADD Blood Drive	14 SAT- Away																																																																																				
15	16 DAY 3 POB St. Baldrick's @ MMS V/JV Spring Sports Begin HS PTA Curriculum, 9:45am @ BOE Room Board of Ed. Mtg. 7:45pm (Budget Meeting #3)	17 DAY 4 PAS PTA, 9:30am HS Gr. 11 College Essay Night, 7pm	18 DAY 5 ELEM. Gr. K-4 Parent/Teacher Conf.-Morning MS PTA Curriculum, 9:45am @ BOE Room MMS/POBMS Spring Sports Info. Mtgs. 3pm MMS/POBMS PTA, 7:30pm JJP BOOK FAIR	19 DAY 6 SR PTA, 9:30am MMS Musical, 4:30pm POB Family Night POB Sports Night @ POBMS	20 DAY 1 Gr. K-4 End of Marking Period PAS Gr. 3 Hoedown MMS Musical, 7pm	21 (R) Leadership Summit HS Senior Citizen Prom, 5-8pm MMS Musical, 7pm																																																																																				
22 (R)	23 DAY 2 Gr. K-4 Beginning of Marking Period ELEM. Gr. K-4 Parent/Teacher Conf.-Morning	24 DAY 3 PAS Spring Pictures HS PTA, 7:30pm	25 DAY 4 ELEM. Gr. K-4 Parent/Teacher Conf.- Morning	26 DAY 5 Gr. K-4 Report Cards Posted Security/Trans. Committee, 9:30am HS College & Career Fair, 7pm GR. 3-8 NYS ELA EXAMS	27 DAY 6 Health Advisory Committee, 12pm @ BOE OB Talent Show	28 GR. 3-8 NYS ELA EXAMS																																																																																				
29	30 DAY 1 ELEM. Gr. K-4 Parent/Teacher Conf.-Morning MS Spring Sports Begin Board of Ed. Mtg. 7:45pm (Budget Meeting #4) GR. 3-8 NYS ELA EXAM MAKE-UPS	31 DAY 2 MAPOB Mtg., 7pm @ MMS			<p>FEBRUARY 2020</p> <table border="1"> <tr><td>S</td><td>M</td><td>T</td><td>W</td><td>T</td><td>F</td><td>S</td></tr> <tr><td></td><td></td><td></td><td></td><td></td><td>1</td><td></td></tr> <tr><td>2</td><td>3</td><td>4</td><td>5</td><td>6</td><td>7</td><td>8</td></tr> <tr><td>9</td><td>10</td><td>11</td><td>12</td><td>13</td><td>14</td><td>15</td></tr> <tr><td>16</td><td>17</td><td>18</td><td>19</td><td>20</td><td>21</td><td>22</td></tr> <tr><td>23</td><td>24</td><td>25</td><td>26</td><td>27</td><td>28</td><td>29</td></tr> </table>	S	M	T	W	T	F	S						1		2	3	4	5	6	7	8	9	10	11	12	13	14	15	16	17	18	19	20	21	22	23	24	25	26	27	28	29	<p>APRIL 2020</p> <table border="1"> <tr><td>S</td><td>M</td><td>T</td><td>W</td><td>T</td><td>F</td><td>S</td></tr> <tr><td></td><td></td><td></td><td>1</td><td>2</td><td>3</td><td>4</td></tr> <tr><td>5</td><td>6</td><td>7</td><td>8</td><td>9</td><td>10</td><td>11</td></tr> <tr><td>12</td><td>13</td><td>14</td><td>15</td><td>16</td><td>17</td><td>18</td></tr> <tr><td>19</td><td>20</td><td>21</td><td>22</td><td>23</td><td>24</td><td>25</td></tr> <tr><td>26</td><td>27</td><td>28</td><td>29</td><td>30</td><td></td><td></td></tr> </table>	S	M	T	W	T	F	S				1	2	3	4	5	6	7	8	9	10	11	12	13	14	15	16	17	18	19	20	21	22	23	24	25	26	27	28	29	30		
S	M	T	W	T	F	S																																																																																				
					1																																																																																					
2	3	4	5	6	7	8																																																																																				
9	10	11	12	13	14	15																																																																																				
16	17	18	19	20	21	22																																																																																				
23	24	25	26	27	28	29																																																																																				
S	M	T	W	T	F	S																																																																																				
			1	2	3	4																																																																																				
5	6	7	8	9	10	11																																																																																				
12	13	14	15	16	17	18																																																																																				
19	20	21	22	23	24	25																																																																																				
26	27	28	29	30																																																																																						

# MARCH 2020

ABBREVIATIONS USED  
IN THIS PUBLICATION

Plainview-Old Bethpage John F. Kennedy HS  
Howard B. Mattlin Middle School  
Plainview-Old Bethpage Middle School  
Old Bethpage Elementary School

HS  
MMS  
POBMS  
OB

Judy Jacobs-Parkway Elementary School  
Pasadena Elementary School  
Stratford Road Elementary School  
Religious Holiday

JJP  
PAS  
SR  
(R)



# April 2020

*"The purpose of education is to replace an empty mind with an open one."*  
 –Malcom S. Forbes



SUNDAY	MONDAY	TUESDAY	WEDNESDAY	THURSDAY	FRIDAY	SATURDAY
<p><b>Long Island 2020 Census</b></p>			<b>1</b> DAY 3  Athletic Council Mtg, 9am @ HS HS 101 @ MMS SEPTA PTA, 7:30pm GR. 3-8 NYS ELA EXAM MAKE-UPS	<b>2</b> DAY 4 <sup>®</sup>  Gr. 5-12 Marking Period Ends  ELEM. PTA Curriculum, 9:45am @ PAS HS Moot Court Tournament Health/Safety Committee, 4pm POB STEAM Night	<b>3</b> DAY 5  Gr. 5-12 Marking Period Begins	<b>4</b>  ACT- Away

5 (R)	6 DAY 6 Arts in Ed. Mtg. 9:30am Board of Ed. Mtg. 7:45pm	7 DAY 1 Gr. 5-12 Report Cards Posted  PTA Pres/Supt. Mtg., 9:30am HS Art Honor Society Induction, 3pm SR Birthday Wishes 7pm HS Pre-Prom Mtg. 7pm	8 DAY 2 (R) MS PTA Curriculum, 9:45am @ BOE Room	9 (R) SCHOOL CLOSED	10 (R) SCHOOL CLOSED	11 (R)																																																																																																																						
OB SPIRIT WEEK																																																																																																																												
12 (R)	13 (R) SCHOOL CLOSED	14 (R) SCHOOL CLOSED	15 (R) SCHOOL CLOSED	16 (R) SCHOOL CLOSED	17 (R) Inclement Weather Day #3 SCHOOL CLOSED	18																																																																																																																						
19 (R)	20 DAY 3 Board of Ed. Mtg. 7:45pm (Budget Adoption)	21 DAY 4 BOCES BUDGET VOTE  HS Reading Night, 7pm MMS/POBMS PTA, 7:30pm NYSSMA SOLO FESTIVAL, LEVEL 1-6, S/E/AS - BETHPAGE	22 DAY 5 SR PTA, 9:30am HS 101 @ POBMS PTA Council, 7:30pm @ HS GR. 3-8 NYS MATH EXAMS	23 DAY 6 (R) OB PTA, 9:30am HS Musical 4:30pm GR. 3-8 NYS MATH EXAM MAKE-UPS	24 DAY 1 HS Musical, 8pm GR. 3-8 NYS MATH EXAM MAKE-UPS	25 HS Musical, 2pm & 8pm																																																																																																																						
26	27 DAY 2 PAS PTA, 7:30pm HS PTA, 7:30pm GR. 3-8 NYS MATH EXAM MAKE-UPS	28 DAY 3 MMS/POBMS Incoming Gr. 5 Parent Transition Night, 7pm POB Athletic Booster Club Mtg. 7:30pm @ HS	29 DAY 4 Nutrition Committee, 9:30am @ JJP HS Orchestra Concert, 7:30pm HS DECA ICDC	30 DAY 5 MMS Spring Concert, 7pm	<table border="1"> <thead> <tr> <th colspan="7">MARCH 2020</th> <th colspan="7">MAY 2020</th> </tr> <tr> <th>S</th><th>M</th><th>T</th><th>W</th><th>T</th><th>F</th><th>S</th> <th>S</th><th>M</th><th>T</th><th>W</th><th>T</th><th>F</th><th>S</th> </tr> </thead> <tbody> <tr> <td></td><td>1</td><td>2</td><td>3</td><td>4</td><td>5</td><td>6</td><td>7</td> <td></td><td></td><td></td><td></td><td></td><td>1</td><td>2</td> </tr> <tr> <td></td><td>8</td><td>9</td><td>10</td><td>11</td><td>12</td><td>13</td><td>14</td> <td>3</td><td>4</td><td>5</td><td>6</td><td>7</td><td>8</td><td>9</td> </tr> <tr> <td></td><td>15</td><td>16</td><td>17</td><td>18</td><td>19</td><td>20</td><td>21</td> <td>10</td><td>11</td><td>12</td><td>13</td><td>14</td><td>15</td><td>16</td> </tr> <tr> <td></td><td>22</td><td>23</td><td>24</td><td>25</td><td>26</td><td>27</td><td>28</td> <td>17</td><td>18</td><td>19</td><td>20</td><td>21</td><td>22</td><td>23</td> </tr> <tr> <td></td><td>29</td><td>30</td><td>31</td><td></td><td></td><td></td><td></td> <td>24</td><td>25</td><td>26</td><td>27</td><td>28</td><td>29</td><td>30</td> </tr> <tr> <td></td><td></td><td></td><td></td><td></td><td></td><td></td><td></td> <td>31</td><td></td><td></td><td></td><td></td><td></td><td></td> </tr> </tbody> </table>		MARCH 2020							MAY 2020							S	M	T	W	T	F	S	S	M	T	W	T	F	S		1	2	3	4	5	6	7						1	2		8	9	10	11	12	13	14	3	4	5	6	7	8	9		15	16	17	18	19	20	21	10	11	12	13	14	15	16		22	23	24	25	26	27	28	17	18	19	20	21	22	23		29	30	31					24	25	26	27	28	29	30									31						
MARCH 2020							MAY 2020																																																																																																																					
S	M	T	W	T	F	S	S	M	T	W	T	F	S																																																																																																															
	1	2	3	4	5	6	7						1	2																																																																																																														
	8	9	10	11	12	13	14	3	4	5	6	7	8	9																																																																																																														
	15	16	17	18	19	20	21	10	11	12	13	14	15	16																																																																																																														
	22	23	24	25	26	27	28	17	18	19	20	21	22	23																																																																																																														
	29	30	31					24	25	26	27	28	29	30																																																																																																														
								31																																																																																																																				

# APRIL 2020

ABBREVIATIONS USED  
IN THIS PUBLICATION

Plainview-Old Bethpage John F. Kennedy HS  
Howard B. Mattlin Middle School  
Plainview-Old Bethpage Middle School  
Old Bethpage Elementary School

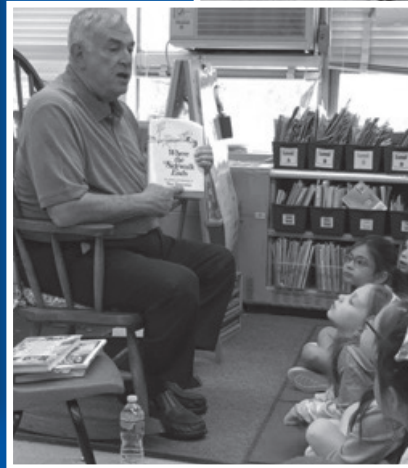
HS  
MMS  
POBMS  
OB

Judy Jacobs-Parkway Elementary School  
Pasadena Elementary School  
Stratford Road Elementary School  
Religious Holiday

JJP  
PAS  
SR  
(R)

# May 2020

*"Learning is a treasure that will follow its owner everywhere."*  
 -Chinese Proverb



SUNDAY	MONDAY	TUESDAY	WEDNESDAY	THURSDAY	FRIDAY	SATURDAY
APRIL 2020 S M T W T F S 1 2 3 4 5 6 7 8 9 10 11 12 13 14 15 16 17 18 19 20 21 22 23 24 25 26 27 28 29 30	JUNE 2020 S M T W T F S 1 2 3 4 5 6 7 8 9 10 11 12 13 14 15 16 17 18 19 20 21 22 23 24 25 26 27 28 29 30	A black and white photograph of four children smiling and posing for a photo. They are all looking towards the camera.			1 DAY 6	2
					PAS Parents Night Out	SAT @ POBJK HS DECA ICDC



3	4 DAY 1 HS Staff Appreciation Breakfast Arts in Ed. Mtg. 9:30am HS PTA Curriculum, 1:45pm @ BOE Room SEPTA PTA, 7:30pm @ POBMS	5 DAY 2 PTA Pres/Supt. Mtg., 9:30am MMS Staff Appreciation Lunch MMS Spring Concert, 7pm POBMS Spring Concert, 7pm JJP PTA, 7:30pm	6 DAY 3 HS 101 @ MMS HS Night of Scenes, 7pm MMS/POBMS PTA, 7:30pm	7 DAY 4 Security/Trans. Committee, 9:30am SR Incoming K Orientation, 10am MMS Spring Concert, 7pm PAS PLANT SALE SR PLANT SALE JJP/OB PLANT SALE MMS BOOK FAIR HS AP EXAMS	8 DAY 5 JJP Fitness Day (Rain Date 5/15) OB Parents Night Out NYSSMA - LEVEL 5,6,AS,HARP @ SYOSSET HS	9
10	11 DAY 6 (R) JJP Incoming K Orientation, 10am Board of Ed. Mtg. 7:45pm (Budget Hearing)	12 DAY 1 (R) VOTER REGISTRATION 4-8pm SR PTA, 9:30am PTA BOE Candidates' Night, 7pm @ POBMS	13 DAY 2 PAS PTA, 9:30am POBMS Spring Concert, 7pm POB Athletic Booster Club Mtg. 7:30pm @ HS HS AP EXAMS	14 DAY 3 ELEM. PTA Curriculum, 9:45am @ MMS Title IX Meeting, 1:30pm @ BOE Room Health/Safety Committee, 4pm PAS/SR Spring Concert, 7pm HS PTA, 7:30pm NYSSMA MAJORS- HOFSTRA UNIVERSITY	15 DAY 4 SR Field Day (Rain Date 5/19) HS Night of A Cappella, 6:30pm & 8:30pm	16 SEPTA/SNAP Track & Field Day, 12-2pm HS Junior Gala, 7pm
17	18 DAY 5 Gr. 5-12 Progress Reports Posted HS Pre-Prom Mtg. 7pm JJP/OB Spring Concert, 7pm	19 DAY 6 (R) SCHOOL BUDGET VOTE 6am-9pm HS Science Honor Society Induction, 3pm; Research Symposium, 4:30pm Audit Committee Mtg. 7pm @ BOE PTA Council, 7:30pm @ MMS	20 DAY 1 Athletic Council Mtg. 9am @ HS MS PTA Curriculum, 9:45am @ BOE Room HS 101 @ POBMS HS Band Concert, 7:30 pm GR. 4 & 8 SCIENCE PERFORMANCE EXAMS	21 DAY 2 (R) HS Student Government Elections OB 3rd Annual Memorial Day Celebration (Rain Date 5/28) OB PTA, 7:30pm	22 Inclement Weather Day #2 SCHOOL CLOSED	23 (R)
24 (R)	25 SCHOOL CLOSED	26 Inclement Weather Day #1 SCHOOL CLOSED	27 DAY 3 Board of Ed. Mtg. 7:45pm (Student Recognition Ceremony)	28 DAY 4 (R) POB Gr. K-4 Literacy Night, 6:45pm @ SR POB District Night of Jazz, 7:30 pm	29 DAY 5 (R) OB/PAS Incoming K Orientation, 10am Health Advisory Committee, 12pm @ BOE SR Family Picnic MMS Carnival for a Cure, 3:30-5pm NYSSMA JAZZ, JAZZ VOICE, JAZZ ALL-STATE - MINEOLA	30 (R)
31 (R)	GR. 4 & 8 SCIENCE PERFORMANCE EXAMS					

MAY 2020

ABBREVIATIONS USED IN THIS PUBLICATION

Plainview-Old Bethpage John F. Kennedy HS  
Howard B. Mattlin Middle School  
Plainview-Old Bethpage Middle School  
Old Bethpage Elementary School

HS  
MMS  
POBMS  
OB

Judy Jacobs-Parkway Elementary School  
Pasadena Elementary School  
Stratford Road Elementary School  
Religious Holiday


JJP  
PAS  
SR  
(R)

# June 2020

*"An investment in knowledge always pays the best interest."* –Benjamin Franklin



SUNDAY	MONDAY	TUESDAY	WEDNESDAY	THURSDAY	FRIDAY	SATURDAY
	1 DAY 6 <sup>®</sup>	2 DAY 1	3 DAY 2	4 DAY 3	5 DAY 4	6
	Arts in Ed. Mtg. 9:30am Social Skills Celebration, 7pm @ SR <b>GR. 4 &amp; 8 SCIENCE WRITTEN EXAM</b>	POB Childcare Orientation and Registration, 7pm @ SR HS Choir Concert, 7:30pm <b>HS U.S. HISTORY &amp; GOVERNMENT REGENTS</b>	Nutrition Committee, 9:30am @ PAS HS Orchestra Tea, 2:30pm HS Underclassmen Awards Ceremony, 7pm	Security/Trans. Committee, 9:30am MMS/POBMS Gr. 8 Visit to HS HS Thespian Honor Society Dinner, 5pm @ Domenico's, Levittown POBMS Art 9 Show, 5-6:30pm POB Athletic Booster Club Mtg. 7:30pm @ HS	POBMS Personal Best Awards, 8am MMS Pride Awards, Per.9 JJP Picnic (Rain Date 6/12) OB Field Day (Rain Date 6/12) PAS Field Day (Rain Date 6/12)	Relay For Life @POBMS SAT @ POBJFK
		<b>GR. 4 &amp; 8 SCIENCE WRITTEN EXAM MAKE-UP</b>				

7	8 DAY 5 HS Business Honor Society Induction, 3pm MMS Art 9 Show, 5-6:30pm Board of Ed. Mtg. 7:45pm	9 DAY 6 JJP Gr. 3 Recorder/Suzuki Concert, 10am V/JV Spring Sports Awards Ceremony, 7pm @ HS SEPTA PTA, 7:30pm @ POBMS	10 DAY 1 PTA Central Admin Lunch ELEM. Art Expo, 5pm @ SR POB Gr. 4 District Concert, 7pm @ SR MMS/POBMS PTA, 7:30pm	11 DAY 2 (R) HS Senior Award & Scholarship Ceremony, 7pm	12 DAY 3 JJP Gr. 4 Carnival SR Circus OB Family Picnic (Rain Date 6/19) HS Sign & Dine, 2:30pm HS Choir Formal, 5:30pm	13 ACT @ POBJFK																																																																																																																
14	15 DAY 4 MMS Sign & Dine HS Senior Walk HS National Honor Society Induction, 7pm	16 DAY 5 PTA Pres/Supt. Mtg., 9:30am HS Senior Athlete Awards/ Wall of Fame Dinner, 6:30pm @ HS OB/PAS PTA 7:30pm	17 DAY 6 JJP PTA, 9:30am PTA Outgoing Presidents Dinner	18 DAY 1 SR PTA, 9:30am HS PTA, 7:30pm	19 DAY 2 PAS Gr. 4 Breakfast JJP/OB Moving Up Ceremony, 10am SR Gr. 4 Party POBMS Sign & Dine	20																																																																																																																
<b>HS FINALS / REGENTS EXAMS</b>																																																																																																																						
21	22 DAY 3 HS Graduation Rehearsal @ Tilles Center, 11am Board of Ed. Mtg. 7:45pm	23 DAY 4 PAS Moving Up Ceremony, 10am PTA Council, 7:30pm @ POBMS	24 DAY 5 SR Moving Up Ceremony, 10am	25 DAY 6 Gr. K-8 Regrouping Day EARLY DISMISSAL  JJP Gr. 4 Breakfast OB Gr. 4 Breakfast HS Senior Prom, 7pm-Midnight	26 DAY 1 Last Day of Classes, K-12 EARLY DISMISSAL  Gr. 5-12 Marking Period Ends Gr. K-4 End of Marking Period  OB Staff Appreciation SR Gr. 4 Breakfast & Human Board Games MMS Moving Up Ceremony, 9am POBMS Moving Up Ceremony, 10am	27																																																																																																																
<b>HS FINALS / REGENTS EXAMS</b>																																																																																																																						
28 HS Graduation @ Tilles Center, 1pm	29 Gr. 5-12 Report Cards Posted	30 Gr. K-4 Report Cards Posted			<table border="1"> <thead> <tr> <th colspan="7">MAY 2020</th> <th colspan="7">JULY 2020</th> </tr> <tr> <th>S</th><th>M</th><th>T</th><th>W</th><th>T</th><th>F</th><th>S</th> <th>S</th><th>M</th><th>T</th><th>W</th><th>T</th><th>F</th><th>S</th> </tr> </thead> <tbody> <tr> <td></td><td></td><td></td><td></td><td></td><td>1</td><td>2</td> <td></td><td></td><td></td><td>1</td><td>2</td><td>3</td><td>4</td> </tr> <tr> <td>3</td><td>4</td><td>5</td><td>6</td><td>7</td><td>8</td><td>9</td> <td>5</td><td>6</td><td>7</td><td>8</td><td>9</td><td>10</td><td>11</td> </tr> <tr> <td>10</td><td>11</td><td>12</td><td>13</td><td>14</td><td>15</td><td>16</td> <td>12</td><td>13</td><td>14</td><td>15</td><td>16</td><td>17</td><td>18</td> </tr> <tr> <td>17</td><td>18</td><td>19</td><td>20</td><td>21</td><td>22</td><td>23</td> <td>19</td><td>20</td><td>21</td><td>22</td><td>23</td><td>24</td><td>25</td> </tr> <tr> <td>24</td><td>25</td><td>26</td><td>27</td><td>28</td><td>29</td><td>30</td> <td>26</td><td>27</td><td>28</td><td>29</td><td>30</td><td>31</td><td></td> </tr> <tr> <td>31</td><td></td><td></td><td></td><td></td><td></td><td></td> <td></td><td></td><td></td><td></td><td></td><td></td><td></td> </tr> </tbody> </table>		MAY 2020							JULY 2020							S	M	T	W	T	F	S	S	M	T	W	T	F	S						1	2				1	2	3	4	3	4	5	6	7	8	9	5	6	7	8	9	10	11	10	11	12	13	14	15	16	12	13	14	15	16	17	18	17	18	19	20	21	22	23	19	20	21	22	23	24	25	24	25	26	27	28	29	30	26	27	28	29	30	31		31													
MAY 2020							JULY 2020																																																																																																															
S	M	T	W	T	F	S	S	M	T	W	T	F	S																																																																																																									
					1	2				1	2	3	4																																																																																																									
3	4	5	6	7	8	9	5	6	7	8	9	10	11																																																																																																									
10	11	12	13	14	15	16	12	13	14	15	16	17	18																																																																																																									
17	18	19	20	21	22	23	19	20	21	22	23	24	25																																																																																																									
24	25	26	27	28	29	30	26	27	28	29	30	31																																																																																																										
31																																																																																																																						

# JUNE 2020

ABBREVIATIONS USED  
IN THIS PUBLICATION

Plainview-Old Bethpage John F. Kennedy HS  
Howard B. Mattlin Middle School  
Plainview-Old Bethpage Middle School  
Old Bethpage Elementary School

HS  
MMS  
POBMS  
OB

Judy Jacobs-Parkway Elementary School  
Pasadena Elementary School  
Stratford Road Elementary School  
Religious Holiday

JJP  
PAS  
SR  
(R)



# July 2020

SUNDAY	MONDAY	TUESDAY	WEDNESDAY	THURSDAY	FRIDAY	SATURDAY
<p>JUNE 2020</p> <p>S M T W T F S</p> <p>1 2 3 4 5 6</p> <p>7 8 9 10 11 12 13</p> <p>14 15 16 17 18 19 20</p> <p>21 22 23 24 25 26 27</p> <p>28 29 30</p>	<p>AUGUST 2020</p> <p>S M T W T F S</p> <p>1</p> <p>2 3 4 5 6 7 8</p> <p>9 10 11 12 13 14 15</p> <p>16 17 18 19 20 21 22</p> <p>23 24 25 26 27 28 29</p> <p>30 31</p>		1	2	3	4
5	6	7	8	9	10	11 Independence Day
12	13	14	15	16	17	18
19	20	21	22	23	24	25
26	27	28	29	30	31	

## August 2020

SUNDAY	MONDAY	TUESDAY	WEDNESDAY	THURSDAY	FRIDAY	SATURDAY
JULY 2020 S M T W T F S 1 2 3 4 5 6 7 8 9 10 11 12 13 14 15 16 17 18 19 20 21 22 23 24 25 26 27 28 29 30 31	SEPTEMBER 2020 S M T W T F S 1 2 3 4 5 6 7 8 9 10 11 12 13 14 15 16 17 18 19 20 21 22 23 24 25 26 27 28 29 30					1
2	3	4	5	6	7	8
9	10	11	12	13	14	15
16	17	18	19	20	21	22
23	24	25	26	27	28	29
30	31					

## Student Registration

Kindergarten registration takes place starting in January for the full-day kindergarten classes beginning in September. Parents of youngsters who will be five years old by December 31 should complete the kindergarten census form found on the District Website, in the POB Herald, Pennysaver, and Educational Horizons, the district newsletter. After receipt of the Kindergarten Census form, the family will receive a registration packet complete with instructions, contact information, and necessary requirements to register. Each child is registered by scheduled appointment by the District Registrar.

At registration, parents must furnish proof of residency and proof of age (original birth certificate, baptismal record or passport). As required by law, proof of immunization and a New York State physical are necessary.

## Bus Transportation

*The Bus Transportation Policy for the 2019-2020 school year is:*

K-12: All students are eligible for bus transportation  
*Bus Schedule*

School bus stops and time schedules can be obtained by accessing the Parent Portal or by contacting the Transportation Office at (516) 434-3074.

*Transportation Requests Due April 1, 2020*

In accordance with New York State Education Law and Board of Education policy, all requests for transportation of children to private and parochial schools for the 2020-2021 school year must be submitted in writing no later than April 1, 2020. Transportation request forms can be obtained from the Transportation Office, Administration Building, Howard B. Matlin Middle School, at the Transportation website [www.pobschools.org/page/6000](http://www.pobschools.org/page/6000) or by calling (516) 434-3074.

Transportation authorization is not automatic or continuous from one school year to the next. Requests must be filed each year for each child requiring such transportation. A parent who plans to apply, or who has applied to private or parochial schools and is awaiting acceptance, should complete an application for each school the child may attend.

The application(s) must be submitted no later than April 1, 2020. In this way, the district may include the cost of transporting the child in the operating budget.

The policy of the Board of Education is to provide transportation to private and parochial schools no more than fifteen (15) miles from the child's home.

## Student Activities

A wide range of planned activities that take place outside of regular school hours is available to students according to their interests and abilities. Such activities include sports, debates, plays, clubs, musical performances, social events, and additional clubs organized as student interest indicates the need. Information on such activities is available from individual schools, and where applicable, activities are described in student handbooks and on our website. Please check back regularly for updates.

## Students' Record Policy

Parents and eligible students have the following rights under the Family Educational Rights and Privacy Act (FERPA). These include the right to:

1. Be informed about the Family Educational Rights and Privacy Acts rights.
2. Inspect and review the student's education record.
3. Exercise a limited control over other peoples' access to the student's education record.
4. Seek to correct the student's educational record, in a hearing, if necessary.
5. Report violations of the Family Educational Rights and Privacy Act to the Department of Health Education and Welfare.

Under the Family Educational Rights and Privacy Act, no personally identifiable information about any student, other than information classified as student directory information (i.e. name, address, grade, school, photographs) may be released to a particular person or agency without the written consent of the parent. A parent who wishes to restrict access to directory information must inform the principal in writing by November 1. In the absence

of such a request, directory information will be made available to an outside group upon the principal's or district's discretion, including the posting of student pictures on the school district website. However, parental consent is not required for disclosure of any student records to school officials with legitimate educational interests. In addition, upon request of another school district in which the student seeks to enroll, the district will disclose education records.

FERPA also enables parents of students to review, obtain copies (for a reasonable fee) and challenge the accuracy or fairness of the students' educational records. Information regarding specified procedures to obtain access to educational records can be obtained through the office of each school or from the Assistant Superintendent for Human Resources. Complaints regarding the district's failure to make records available or to respond adequately to challenges about accuracy or fairness should be forwarded to the Superintendent's office. Subsequent complaints may be filed in writing to The Family Policy Compliance Office, U.S. Department of Education, 400 Maryland Avenue, SW, Washington, D.C. 20202-8520

## Code of Conduct

*Please note that our Code of Conduct has been revised to reflect the most recent New York State changes to the Dignity for All Students Act. Please check our website at <http://www.pobschools.org/domain/462> to access the complete version.*

The Board of Education is committed to providing a safe and orderly school environment where students receive and district personnel deliver quality educational services without disruption or interference. Responsible behavior by students, teachers, other district personnel, parents and other visitors is essential to achieving this goal.

In accordance with the Dignity for All Students Act and the District's Dignity for All Students Act Policy 7580 and Regulation 7580R, students have a right to be free from harassment, bullying, including cyberbullying and/or discrimination based on a person's actual or perceived race, color, weight, national origin, ethnic group, religion, religious practice, disability, sexual orientation, gender/gender identity or sex, by school employees or students on school property, at a school function and/or off school



property where such harassment, bullying, including cyberbullying and/or discrimination creates or would foreseeably create a risk of substantial disruption within the school environment, where it is foreseeable that the conduct, threats, intimidation or abuse might reach school property.

The district has a long-standing set of expectations for conduct on school property and at school functions. These expectations are based on the principles of civility, mutual respect, citizenship, character, tolerance, honesty and integrity.

The Board recognizes the need to clearly define these expectations for acceptable conduct on school property, to identify the possible consequences of unacceptable conduct, and to ensure that discipline when necessary is administered promptly and fairly. To this end, the Board adopted a code of conduct.

Unless otherwise indicated, this code applies to all students, school personnel, parents and other visitors when on school property or attending a school function.

### **Student Rights**

The district is committed to safeguarding the rights given to all students under state and federal law. In addition, to promote a safe, healthy, orderly and civil school environment, all district students have the right to:

1. In accordance with the Dignity for All Students Act, the District's Dignity for All Students Act Policy 7580 and Regulation 7580R, be free from harassment, bullying, including cyberbullying, and/or discrimination by school employees or students including but not limited to harassment, bullying, including cyberbullying, and/or discrimination based on a person's actual or perceived race, color, weight, national origin, ethnic group, religion, religious practice, disability, sexual orientation, gender/gender identity or sex.
2. The opportunity to take part in all district activities free of prohibited discrimination, harassment, and bullying in conformity with the law regardless of actual or perceived race, color, weight, disability, national origin, ethnic group, religion practice, gender, sex or sexual orientation

or disability.

3. Present their version of the relevant events to school personnel authorized to impose a disciplinary consequence in connection with the imposition of a penalty.
4. Access school rules and, when necessary, receive an explanation of those rules from school personnel.
5. Nothing herein shall be construed to prohibit a denial of admission into, or exclusion from, a course of instruction based on a person's gender that would be permissible under Education Law Sections 3201-a or 2854(a) and Title IX of the Education Amendments of 1972 (20 USC Section 1681, et seq.) or to prohibit, as discrimination based on disability, actions that would be permissible under Section 504 of the Rehabilitation Act of 1973 and/or the Americans with Disabilities Act.

### ***All district students have the responsibility to:***

1. Contribute to maintaining a safe and orderly school environment that is conducive to learning and to show respect to other persons and to property and refrain from any act of harassment, bullying, including cyberbullying, and/or discrimination including but not limited to any act of harassment, bullying, including cyberbullying, and/or discrimination based on actual or perceived race, color, weight, national origin, ethnic group, religion, religious practice, disability, sexual orientation, gender/gender identity, or sex.
2. Be familiar with and abide by all district policies, rules and regulations dealing with student conduct.
3. Attend school every day unless they are legally excused and be in class, on time, and prepared to learn.
4. Work to the best of their ability in all academic and extracurricular pursuits and strive toward their highest level of achievement possible.
5. React to direction given by teachers,

Administrators and other school personnel in respectful, positive manner.

6. Work to develop mechanisms to control their anger.
7. Ask questions when they do not understand.
8. Seek help in solving problems.
9. Dress appropriately for school and school functions.
10. Accept responsibility for their actions.
11. Conduct themselves as representatives of the district when participating in our attending school-sponsored extracurricular events and to hold themselves to the highest standards of conduct, demeanor, and sportsmanship.
12. Tell a responsible adult if one hears that another student is going to cause harm to others.

### **Student Dress Code**

All students are expected to dress in a manner that, in the judgment of the faculty and administration, is safe, appropriate and does not disturb or interfere with the educational process. The wearing of hats, clothing or attire which bears items that are vulgar, obscene, libelous or denigrate others on account of race, color, religion, creed, national origin, gender, sexual orientation or disability are prohibited. Additionally, dress should not promote or endorse the use of alcohol, tobacco or illegal drugs, or gang related affiliation, or encourage other illegal or violent activities. Furthermore, all underwear must be completely covered. Students that violate the dress code shall be required to modify their appearance by covering or removing the offending item and, if necessary or practical, replace it with an acceptable item. Any student who refuses to do so shall be subject to appropriate disciplinary action.

## Prohibited Student Conduct

(see full list on district website)

The Board of Education expects all students to conduct themselves in an appropriate and civil manner with regard to the rights and welfare of other students, district personnel and other members of the school community, and other individuals lawfully on school property and with regard to the care of school facilities and equipment.

The Board recognizes the need to make its expectations for student conduct while on school property or engaged in a school function specific and clear. The rules of conduct listed below are intended to do that and focus on safety and respect for the rights and property of others. Students who will not accept responsibility for their own behavior or students who violate this Code of Conduct's school policies and rules, and/or violate Federal, New York State or Nassau County law will be required to accept the consequences for their conduct which may include disciplinary penalties.

*Students may be subject to disciplinary action up to and including suspension from school, when they:*

- A. Engage in conduct that is disorderly.
- B. Engage in conduct that is insubordinate.
- C. Engage in conduct that is disruptive.
- D. Engage in conduct that is violent.
- E. Engage in any on or off-campus conduct that endangers the safety, morals, physical or mental health, and welfare of others or substantially disrupts or interferes with the educational process or school environment.
- F. Engage in misconduct while on a school bus.
- G. Engage in any form of academic misconduct.

## Reporting Violations

All students are expected to promptly report violations of the code of conduct to a teacher, guidance counselor, the building principal or his or her designee. Any student observing a student possessing a weapon, alcohol or illegal substance on school property or at a school function shall report this information immediately to a teacher, the

building principal, the principal's designee or the superintendent.

In order for the District to effectively enforce the District's Dignity for All Students Act Policy 7580 and Regulation 7580R, it is essential that all victims and persons with knowledge of harassment, bullying, and/or cyberbullying or similar behavior report it immediately in accordance with Dignity for All Students Act Policy 7580 and Regulation 7580R.

## Disciplinary Consequences

Students who are found to have violated the district's Code of Conduct may be subject to the following consequences, either alone or in combination.

1. Oral warning
2. Written warning
3. Written notification to parent
4. Detention
5. Suspension from transportation
6. Suspension from athletic participation
7. Removal/suspension from a specific social event, extracurricular activity or privilege
8. In-school suspension
9. Removal from classroom
10. Short-term (five days or less) suspension from school
11. Long-term (more than five days) suspension from school
12. Permanent suspension from school

## Discipline of Students with Disabilities

The Board recognizes that it may be necessary to suspend, remove or otherwise discipline students with disabilities to address disruptive or problem behavior.

The Board also recognizes that students with disabilities have certain procedural protections whenever school authorities intend to impose discipline upon them. The Board is committed to ensuring that the procedures followed for suspending, removing or otherwise disciplining students with disabilities are consistent with the procedural

safeguards required by applicable laws and regulations. This code of conduct affords students with disabilities subject to disciplinary action no greater or lesser rights than those expressly afforded by applicable federal and state law and regulations. In any instance where this Code of Conduct differs or is inconsistent with federal or state law or regulation, the federal or state law or regulation is controlling.

## Visitors to the Schools

The building principal or his/her designee is responsible for all persons in the building and on school grounds. For these reasons, the following rules apply to visitors to the schools:

1. Anyone who is not a regular staff member or student at a particular school will be considered a visitor.
2. All visitors must contact the building at least 30-minutes in advance of the planned visit to a school.
3. All visitors to the school must enter through the designated point of entry (main entrance) and immediately report to the security desk to sign the visitor's register.
4. All visitors are required to present photo identification and will be issued a visitor's identification badge, which must be worn at all times while in the school or on school grounds.
5. The visitors must return the visitor's identification badge to the security desk or principal's office before leaving the building.
6. Visitors attending school functions that are open to the public, such as parent-teacher organization meetings or public gathering must follow district procedures.
7. Any unauthorized person on school property will be reported to the principal or his/her designee. Unauthorized persons will be asked to leave. The police may be called if the situation warrants.
8. All visitors are expected to abide by the rules for public conduct on school property contained in this Code of Conduct.

## Public Conduct on School Property

The district is committed to providing an orderly, respectful environment that is conducive to learning. To create and maintain this kind of an environment, it is necessary to regulate public conduct on school property and at school functions. For purposes of this section of the code, "public" shall mean all

persons when on school property or attending a school function including students, teachers and district personnel.

The restrictions on public conduct on school property and at school functions contained in this code are not intended to limit freedom of speech or peaceful assembly. The district recognizes that free inquiry and free expression are indispensable to the objectives of the district. The purpose of this code is to maintain public order and prevent abuse of the rights of others. All persons on school property or attending a school function shall conduct themselves in an orderly and lawful manner. In addition, all persons on school property or attending a school function are expected to be properly attired for the purpose they are on school property.

## Communicating with Parents

Report cards are electronically issued to elementary parents on a trimester basis. For grades 5-12, they are posted quarterly. (Please see calendar for dates). Access can be obtained through the Parent Portal. If you do not have an account, please contact the main office of your child's school for further information on access to the Parent Portal.

Parents are urged to discuss these reports with their children. When a child is experiencing difficulties, parents should contact the child's teacher and/or guidance counselor to determine the reason for the difficulties so that a plan for improvement may be developed.

In case of a school or district emergency, the district utilizes an electronic system called School Messenger to send telephone, text and email messages to parent/guardians. Please be sure your e-mail and phone numbers are up-to-date in the Parent Portal.

If you have questions or concerns, please contact the main office of your child's school.

## Attendance Policy

The Plainview-Old Bethpage School District is committed to the success of all its students. A critical component of academic success is coming to school on a regular, consistent basis. Students who are in school each day, all day, learn in a consistent, orderly way. They apply the knowledge they have gained one day to the new insights and understanding they

will gain in the next day. A disruptive attendance pattern interferes with the continuity of instruction that is essential to the learning process. There is simply no substitute for being in class: to listen, to participate, to question, to experiment, to challenge. The stimulation of being in a classroom with other learners, guided by a knowledgeable, insightful teacher, is at the core of a sound education. Learning builds day by day, and consistent attendance is vital to make learning meaningful.

In order to encourage students to achieve excellence in their attendance habits, and thereby provide themselves with the best opportunity to succeed in school, the Board of Education has adopted the following attendance policy.

In accordance with New York State Law, the Board of Education requires that students attend school full time from the age of six (6) years old until the last day of the school year in which they turn sixteen (16), unless the student has completed an approved four-year high school course of study.

The following is a summary of the district's attendance policy. The full text is available from your school principal, or on the district's web site: [www.pobschools.org](http://www.pobschools.org).

### Excused and Unexcused Absences

If a student is absent from school for all or part of the school day, the student must provide a reason for the absence to the building principal or his/her designee. The building principal or his/her designee shall then determine whether the absence is considered excused or unexcused.

#### *Excused Absences*

##### **A. The district recognizes the following absences as "excused" absences:**

- Family death, illness, or emergency
- Student illness
- Chronic/Extended Illness
- Pre-arranged appointments with the court, social service agencies or other state agencies as well as appointments with health care providers that cannot be scheduled outside school hours.

- Religious observances, exclusive of religious instructions
- Approved college visits (with documentation)
- Suspensions
- Exceptional circumstances: The principal may approve a pre-arranged absence where the absence from attendance is in the best interests of the student and his/her family. Approval for such absences must be requested of the principal in writing. In extenuating circumstances that are supported by adequate documentation, the principal may approve an exceptional circumstance after it has occurred.

##### **B. Documentation of Absences**

Absences for any of the aforementioned reasons may be considered excused by the building principal or his/her designee upon receipt of a written, signed explanation from the student's parent(s)/person(s) in parental relation, together with any supporting documentation that may be required. This information should be submitted to the school immediately by the student or parent/person in parental relation upon return from his/her absence and in no case later than five (5) school days upon the student's return..

##### **C. Make-up Work for Excused Absences**

Students with properly excused absences will be given the opportunity and are expected to make up all missed work. It is the responsibility of students to arrange Make-up work/tests with their teacher. All work missed must be satisfactorily completed by a date set by the student's teacher(s) for the class(es) in which the absence(s) occurred. Students who fail to make up all missed work resulting from an excused absence will have that absence converted to an unexcused absence.

#### *Unexcused Absences*

Absences for any reason other than those set forth as "excused absences" under this policy, shall be considered "unexcused".

Students who leave early or arrive late for any other reason than those set forth as "excused absences" under the policy, shall be considered "unexcused".



## Nonattendance Disciplinary Sanctions

### Denial of Course Credit

A high school student will be denied course credit when he/she has exceeded eighteen (18) absences for a full year course or exceeding (9) absences for a half year course exclusive of absences for approval school sponsored trips and activities and pre-arranged school appointments.

However, if the absences are determined to be the result of “unexcused” absences i.e. truancy/cutting, a student will be denied credit when he/she has exceeded six (6) “unexcused” absences per full year course or exceeded four (4) “unexcused” absences per half year.

In the middle school, 7th and 8th grade students who fall below the minimum standards for attendance will be given a grade of “incomplete.” Students given an incomplete grade must attend summer school to earn a final grade. For courses not offered in summer school, students must satisfactorily complete, over the summer, an independent project under the supervision of the principal of his/her designee.

In summer school, absences in excess of three (3) will result in denial of credit. Lateness of less than fifteen minutes will be considered  $\frac{1}{4}$  absence, and those in excess of fifteen minutes will be considered  $\frac{1}{2}$  absence.

*Other Disciplinary Sanctions Include:*

- Ineligibility for co-curricular and interscholastic activity
- Ineligibility for driver’s education
- Detention or in-school suspension
- Ineligibility for student parking
- Ineligibility for summer school registration

## Physical Education Attendance

For the most up-to-date attendance policy, please visit our website at [www.pobschools.org](http://www.pobschools.org). Students with **three (3) or more unexcused absences in a semester** in physical education class will receive a failing grade and be denied credit for physical education for that semester. An unexcused absence will not be allowed to be made up and will result in full loss of credit for the day.

## Appeals Process

Students faced with loss of credit in a course due to absence may bring their appeals before the principal or his/her designee no later than five (5) school days after being informed of the decision to withhold credit or invoke sanctions.

An appeal of the principal’s decision may be made to the Superintendent of Schools.

## Students with Disabilities

Students with disabilities who receive unexcused absences shall be referred to the CSE or Section 504 team.

## Students Past the Age of Compulsory Attendance

A student who is past the compulsory age of attendance may be dropped from enrollment if he/she has been absent for twenty (20) consecutive days.

## Class Assignments and Testing on Religious Holidays

Our administrative procedures state that, to the extent possible, testing will be avoided during religious holidays. Students who are absent for religious reasons will be given an opportunity to make-up any missed work, including homework assignments.

## Child Care Program

The Child Care Program is open to all district students in Kindergarten through Eighth Grade. It provides before and after school supervision on all days in which school is in session. Each school has its own child care facility enabling the children to remain in their building for the entire day. The before school portion of the program begins at 7:00 AM in each school\* and runs until the beginning of the school day. The after school portion begins immediately after the school day ends and runs until 6:00 PM at the Middle Schools\*, 6:15 PM at the Elementary Schools.

The Child Care Program provides a choice of cereal with milk in the mornings and a snack with juice in the afternoon. While at child care, the children will be provided an opportunity to do homework and engage in various activities such as arts & crafts, reading, television/movies, or playing outdoors/indoors (weather and space permitting).

Registration for the Program is open year-round

based on availability. Once the program is at capacity we close registration and have a waitlist. Additional information about the Child Care Program may be found on the District’s website or by calling (516) 434-3124.

*\*Middle School Program is contingent upon registration. The Middle School programs may be combined if there is insufficient registration.*

## Half-Day Program

Independent of the regular child care program, the District’s Half-Day Program is open to all district students in Kindergarten through Fourth Grade for a fee. Registration forms for the half days will be emailed home through School Messenger a few weeks prior to the half-day. Additional information for the Half-Day Program can be found on the Child Care page of the District’s website or by calling (516) 434-3124.

## Cafeteria

The food service program offered by the Board of Education is a self-sustaining operation. All schools have a complete hot and cold food service.

## Emergency Procedures

**Lockout** – A lockout is executed to secure school buildings and grounds during incidents that pose an imminent concern outside of the school. Mobility within the building continues. Entry to the building is limited through a locked and monitored door.

**Lockdown** – Lockdown occurs when there is a threat inside the school. No one will be allowed to enter or leave classrooms or the building. All outdoor activities are cancelled until further notice.

**Closed Campus** – During adverse weather conditions or events occurring that necessitate action, the campus may be closed. All outdoor activities will be cancelled and no one will be permitted to leave or enter the building.

## Dangerous Instruments and Weapons in School

The Plainview-Old Bethpage Board of Education, in order to provide a safe and healthy environment where students learn, has adopted a policy prohibiting dangerous instruments and weapons in school.

Dangerous instruments, firearms, chemicals, explosive devices or weapons are prohibited from

school grounds, buildings, buses and field trips.

A weapon is any instrument capable of inflicting bodily harm, such as, but not limited to, Swiss army knives, pen knives, razor blades, switchblade knives, gravity knives, pilum ballistic knives, cane swords, electronic dart guns, chukka sticks and Kung Fu stars.

Any student found guilty of bringing a firearm onto school premises shall be suspended for a period of not less than one calendar year, subject to review by the Superintendent. In addition, he/she shall be referred to the appropriate criminal justice or juvenile delinquency authorities.

Students who bring a weapon to school face a Principal's suspension and may be referred for a Superintendent's suspension.

### Substance Use/Abuse Policy

It is the policy of the Plainview-Old Bethpage Central School District to promote healthy life styles for students and staff using appropriate instructional strategies and to inhibit the use/abuse of alcohol, tobacco, and other substances within its jurisdiction. Plainview-Old Bethpage is a substance free district in which smoking and vaping are prohibited in all school buildings and on school grounds. Therefore, no person may use, possess, sell or distribute alcohol or other substances, nor may use or possess drug paraphernalia, including e-cigarettes, on school property or at school sponsored events, except drugs as prescribed by a physician. Further, any person exhibiting behavior, conduct, or personal or physical characteristics indicative of having used or consumed alcohol or other substances shall be prohibited from entering school grounds or school sponsored events.



### Statement on Sexual Harassment

The Board of Education recognizes that harassment of students, employees (including all staff, applicants for employment, both paid and unpaid interns, exempt and nonexempt status, part-time, seasonal, and temporary workers, regardless of immigration status) and certain “non-employees” (which includes contractors, subcontractors, vendors, consultant and other persons providing services pursuant to a contract, or their employees) on the basis of sex, gender and/or sexual orientation is abusive and illegal behavior that harms, targets and negatively impacts the school culture by creating an environment of fear, distrust, intimidation and intolerance. Sexual harassment can include unwelcome sexual advances, requests for sexual favors, and other verbal, nonverbal, or physical conduct of a sexual nature, or verbal, nonverbal or physical aggression, intimidation or hostility that is based on actual or perceived gender and sexual stereotypes. The Board further recognizes that preventing and remedying such harassment in schools is essential to ensure a healthy, nondiscriminatory environment in which students can learn and employees and “non-employees” can work productively.

Sexual harassment is a form of sex discrimination and is unlawful under federal, state, and (where applicable) local law. Sexual harassment includes harassment on the basis of actual or perceived or self-identified sex, sexual orientation, gender identity, gender expression, and transgender status. Sexual harassment of a student can deny or limit the student's ability to participate in or to receive benefits, services, or opportunities from the school's program. Sexual harassment includes unwelcomed conduct which is either of a sexual nature, or which is directed at an individual because of that individual's sex, when:

- a. submission to that conduct is made either explicitly or implicitly a term or condition of an individual's employment or a student's education;
- b. submission to or rejection of such conduct is used as the basis for decisions affecting an individual's employment or a student's education; or
- c. the conduct has the purpose or effect of unreasonably interfering with an employee's or “non-employee's” work or student's school performance or creating an intimidating, hostile

or offensive work or educational environment, even if the complaining individual is not the intended target of the sexual harassment.

The Board is committed to providing an educational and working environment that promotes respect, dignity and equality and that is free from all forms of sexual harassment. To this end, the Board condemns and strictly prohibits all forms of sexual harassment on school grounds, school buses and at all school-sponsored activities, programs and events, including those that take place at locations outside the district, or outside the school setting if the harassment impacts the individual's education or employment in a way that violates their legal rights, including when employees and “non-employees” travel on district business, or when harassment is done by electronic means (including social media).

If you believe you have been subjected to or witnessed sexual harassment, you are encouraged to report the harassment to a principal, supervisor, or Title IX coordinator so we can take action.

Our complete policy may be found:

[https://www.boarddocs.com/ny/pobcsd/Board.nsf/files/B6VHQP49A0EF/\\$file/Sexual%20Harassment%20Pol.%20Current%206121.and.7531.New%200110.Nov.2018.pdf](https://www.boarddocs.com/ny/pobcsd/Board.nsf/files/B6VHQP49A0EF/$file/Sexual%20Harassment%20Pol.%20Current%206121.and.7531.New%200110.Nov.2018.pdf)

Our Complaint Form may be found:

[https://www.boarddocs.com/ny/pobcsd/Board.nsf/files/B6VHVF4A535D/\\$file/SEXUAL%20HARASSMENT%20EXHIBIT.0110.Nov.2018.pdf](https://www.boarddocs.com/ny/pobcsd/Board.nsf/files/B6VHVF4A535D/$file/SEXUAL%20HARASSMENT%20EXHIBIT.0110.Nov.2018.pdf)

### Non-Discrimination Regulations

The Plainview-Old Bethpage School District, under the requirements of TITLE IX, Part 86, does not discriminate on the basis of gender in the educational program or activities which it operates either in the employment of personnel or the administration of students.

Inquiries regarding our sexual harassment or non-discrimination policies may be made to our Title IX Compliance Officers; Ms. Laurie Lynn, Director of Guidance at (516) 434-3150, and Mr. Christopher Donarummo, Assistant Superintendent for Student Services and Safety at (516) 434-3074.

The Plainview-Old Bethpage Central School District, Plainview, New York 11803 hereby gives notice that it does not discriminate on the basis of disability in violation of ADA or section 504 of the REHABILITATION ACT OF 1973. The School district further gives notice that it does not discriminate in admission or access to its programs and activities.

No person shall be denied employment solely because of any physical, mental, or medical impairment which is unrelated to the person's ability to engage in the activities involved in the job for which application has been made.

Inquiries concerning this policy may be referred to the Section 504 Compliance Officer, 106 Washington Ave., Plainview, New York 11803

## **Health Services and Guidelines**

The school nurse is responsible for the planning, coordination, and implementation of a health services program, which meets all the requirements set forth in the laws and Commissioner's regulations. A cumulative health record is maintained for all students. Registered nurses are available for consultation in all matters pertaining to the health and well-being of the students.

### *Health Examinations*

In addition to first aid and physical inspection, nurses keep records of students' physical examinations. All female students in grade 5 and 7 are screened for scoliosis. Male students are screened in grade 9. Referrals are made to private physicians whenever necessary.

### *Immunization*

According to New York State law, students will not be permitted to enter school or school-sponsored programs if they have not met the immunization requirements. Please consult your school nurse for a complete list of diseases requiring immunization.

### *Contact Information Card*

It is most important that the contact information card given to your child at the beginning of the school year be returned to the school nurse, listing the name and telephone number of two responsible adults (one of whom must live in Plainview or Old Bethpage) who are to be notified if you are not readily available. The

individuals you choose for this responsibility should be available to come to school during the day to pick up your child if necessary. The annual health survey on the back of the card must also be completed. PLEASE UPDATE YOUR CONTACT INFORMATION CARD AS NECESSARY.

### *Medication*

If medication prescribed by your physician must be taken during school hours, please contact the school nurse. The school may not give your child any medication (including over the counter) unless there is written direction by the family physician and parent.

### *Other*

It is not uncommon for schools to have occasional incidents of head lice. Please encourage your child not to share combs, hats and other personal items. The school nurse must be informed immediately if your child has head lice. Parents will be notified by the school nurse should any problems arise. Please contact the school nurse if you have any questions or concerns.

## **Child Abuse and Maltreatment**

Each year more than a million children in the United States are subjected to severe neglect or the agony of physical, sexual, or emotional abuse. To report suspected child abuse or maltreatment, call the NEW YORK STATE CHILD ABUSE HOTLINE at 800-342-3720. The calls are completely anonymous.

## **Child Find Statement**

The Plainview-Old Bethpage Central School District recognizes its responsibility to provide a free and appropriate public education to eligible students with disabilities within its geographical boundaries. The District has a "child find" process that is designed to locate, identify and evaluate children with disabilities residing within its geographical boundaries preschool through grade 12 or through age 21 if they have not received a high school diploma.

If you know of a child who lives within the boundaries of the Plainview-Old Bethpage Central School District and attends school in the District who may be in need of special education and/or related services, please contact the District's Office of Pupil

Personnel Services for further information regarding the referral and evaluation process. If the student is a school age student who attends a non-public private school that is not located within the geographical boundaries of the School District, the student may need to be referred to the school district in which the non-public school is located in order to receive services during the regular school year. Please contact the school district for information regarding time deadlines for request for services.

The District's Child Find process extends to students with physical or mental impairments that substantially limit a major life activity. Such students may be eligible for services or accommodations pursuant to Section 504 of the Rehabilitation Act. Section 504 is a Federal civil rights statute that prohibits discrimination against persons with disabilities and programs receiving Federal financial assistance. Please contact your child's building assistant principal for more information regarding Section 504 eligibility and services.

## **Title IX Committee Mission Statement**

The purpose of this committee is to develop, strengthen, and raise awareness of gender equality through education, communication and athletics.

We accomplish this by securing and promoting celebrations and achievements that foster gender equality, distributing materials, monitoring issues within the school community, and encouraging student participation in all endeavors toward this goal.

## **Use of School Buildings and Grounds**

Non-profit organizations are granted the use of school facilities under appropriate circumstances. At least ten days prior to the date on which a facility is needed, an online application must be filed. Information regarding fees and insurance requirements may be obtained from the Plainview-Old Bethpage CSD website located online under the "District Offices" area in the Office of Buildings and Grounds section. Once on the Office of Buildings and Grounds online site, click on "Community User Requestors Guide." Any questions regarding your application, please call the Buildings and Grounds Office at (516) 434-3110.



## Parking on School Grounds

Please be informed, the Nassau County Police will ticket, without warning, all vehicles parked illegally. District driveways and parking lots have been posted in accordance with the appropriate Town of Oyster Bay ordinance and Nassau County Parking regulation. Enforcement is now the responsibility of the NCPD.

In general, parking within 20 feet of any district facility, on the curb that is adjacent to any building and within a designated handicapped parking space, without a valid permit, is in violation of the above referenced parking regulations.

## Voter Qualifications

A person shall be eligible to vote at any school meeting for the election of school board members, the school district budget, and upon other matters which may be brought before such meeting, who is:

1. A citizen of the United States.
2. Eighteen years of age, or older.
3. A resident within the district for a period of thirty days preceding the meeting of the vote.
4. Any person who is registered to vote for general election purposes (Federal, State or County elections) will be entitled to vote in school district elections without further registration. In summary, you may vote if your name appears on the school district registration lists or on the county registration lists.

Registration dates for new voters are announced through public notices and school district mailings. Residents may register at the Jamaica Avenue School and Administration Offices at H.B. Mattlin Middle School.

Registration is on May 12, 2020 from 4pm-8pm, unless otherwise specified.

Absentee ballots may be utilized for voting on the school district budget and on any propositions presented, and for voting for members of the Board of Education.

## Working Papers

Working papers are required up to age eighteen. They are issued in the Guidance Department of POBJFK High School, Monday to Friday, 8:00 am to 3:00 pm (except school holidays). Summer hours for July and August are Monday, Wednesday and Friday 8:00am to 1:00pm and Tuesday and Thursday, 8:00

am to 3:00 pm. Applications are required and may be obtained at both middle schools, the high school, as well as the district website. For further information, call (516) 434-3150.

## Every Student Succeeds Act (ESSA)

According to Every Child Succeeds Act, parents can request information regarding the professional qualifications of their child's teacher. Information such as licensing criteria, certification status, undergraduate degree major and graduate certificates, if applicable, can be provided to all parents. Parents wishing to receive this information should contact the principal of their child's school.

## Annual Asbestos Notification

In accordance with 40CFR § 763.84.c, regard this statement as the district's annual notification to all staff, workers, students and/or their legal guardians that the district continues to maintain its Asbestos Management Plan (AMP) which documents all performed or planned asbestos related inspections, response actions, and post-response action activities, including periodic re-inspection and surveillance activities within the school district.

A copy of this AMP is available for review and/or inspection at the Buildings and Grounds Office located at 117 Central Park Rd., Plainview, NY 11803

## Pesticide Notification

Education Law 409-h requires that all public and private schools in New York State establish a pesticide notification procedure to inform parents about school pesticide practices and provide them the opportunity to be notified when pesticides are applied in their children's schools.

It is the intent of the Plainview-Old Bethpage Central School District to continue to practice Integrated Pest Management (IPM) methods that do not employ the use of pesticides at your child's school whenever possible. To maintain compliance with the requirements of the law, the principal has been designated as the contact person at your child's school and he/she will keep you informed of all relevant issues. In the event the principal is not available, please call our Building and Grounds Office (516) 434-3110.

## Privately Conducted Activities, Trips and College Tours

Annually, the high school offers a college tour for 10th grade students. Participation is open to 10<sup>th</sup> grade students in good standing. The selection is done by a lottery. The Plainview-Old Bethpage School District does not sponsor or co-sponsor private enterprises which conduct activities, trips and/or college tours. Should any parent, guardian or student have any questions as to whether or not a trip or activity is school-related or school-sponsored, please contact the building principal.

## Pupil Personnel Services

Pupil Personnel Services is a team effort consisting of school guidance counselors, classroom teachers, psychologists, speech and language therapists, special education teachers, social workers, related service providers, AND YOU, THE PARENT, working together to help your child. If you have a question and wish to speak with a member of the department, please call (516) 434-3020.

Parents of students with disabilities who are parentally placed in non-public schools must request special education services in writing to the school district of location by June 1 preceding the school year for which the request for services is made, except when a student is first identified as a student with a disability after the first day of June preceding the school year for which the request is made. In this case the parent must submit the written request for services within 30 days after the student was first identified.

A message for incoming Kindergarten families and new entrants to the POB district: The District provides special education services and programs to students with disabilities pursuant to applicable federal and state laws. Any parent or person in parental relation who suspects that his/her child has a disability may refer the child for an evaluation by the District's Committee on Special Education (CSE) for eligibility for special education services and programs. More detailed information on this process is available in *A Parent's Guide to Special Education*, which is published on the New York State Education Department's website in English and Spanish. Parents or persons in parental relation should contact the District's Director of Pupil Personnel Services, Dolores Espinosa, at (516) 434-3020 for additional information.

## Vocational Education

Commencing with the eleventh grade, students may apply for approved technical or occupational programs in addition to their regular academic subjects. The district cooperates with BOCES in meeting the needs of vocational students. Interested students must notify their counselor by the end of the first marking period of the year prior to attendance. For additional details, parents and students are encouraged to speak with their high school counselor.

## Project Challenge – Gifted Program

Plainview-Old Bethpage hosts a gifted program for students who qualify in grades 3 – 7. The program is designed to provide challenging academic experiences in an intellectually and stimulating classroom environment. Students are encouraged to become motivated leaders, productive group members and curious, proficient researchers.

The selection process begins in January each year, with the administration of the OLSAT (IQ) exam for all second graders and selected 3rd and 4th graders with parent permission. Students in grade 3 who qualify (entry level score of 130 on OLSAT exam inclusive of other measures) attend for half day while students in grade 4-6 attend for one full day a week with a similar qualifying score. Grade 7 students have an option of participating in a Science/Engineering class for one quarter which is a substitute for another course. More information about the program can be found on the district website.

## Project Challenge Parent Association

PCPA is a group which seeks to promote and support gifted education and related activities in our school district. Meetings are open to all members of the community.

## Adult Education Program

Please consult your Continuing Education brochure for details regarding the fall and spring programs. These programs are designed to appeal to a diversity of needs and interests in the community. Suggestions for new courses are always welcome. For further information, contact the Continuing Education Office at (516) 434-3123.

Plainview-Old Bethpage Senior Citizens, 60 years

of age and over, are given a 50% discount on many courses. Proof of age and POB residency is required.

High school seniors may enroll in Adult Education courses at the senior citizen fee. Parental consent and approval of the high school principal and guidance counselor are required.

## Art Education

The art education program in Plainview-Old Bethpage is designed to provide K-12 students with opportunities to participate in fine art activities and experiences which will develop their understanding, appreciation and enjoyment of the Visual Arts.

While supporting the New York State Learning Standards for the Arts, art instruction is based on the Basic Elements of Art and Principles of Design; as well as creating, presenting, responding to, and connecting art to personal meaning and external contexts. Art students are exposed to creative opportunities in various mediums and areas of self-expression, and create projects focused on art history and the works of accomplished artists. All K-12 students are exposed to a wide variety of art enrichment programs, museum trips, art exhibitions and contests, as well as exposure to working artists. Students can choose to participate in the advanced Studio in Art courses their 8th grade year.

Elective Visual Art courses are offered to students in grades 9-12, in preparation for AP level Art opportunities. Sequential course offerings include Media Arts, Drawing & Painting, Fashion Design, Photography (Darkroom and Digital), Computer Graphics, Animation/Web/Gaming Design, Advertising and Design, as well as Sculpture and Ceramics. AP Art History is also offered to all students in grades 10-12.



## Music Education

The music education program in Plainview-Old Bethpage is designed to provide students with opportunities to participate in music activities and experiences which will develop their understanding, appreciation and enjoyment of music.

The program includes general music, which is required of all students from kindergarten through 7<sup>th</sup> grade. This program introduces students to a variety of listening and “hands-on” experiences which draw from the musical elements of rhythm, melody, harmony, form, tone, color and expression. All 4<sup>th</sup> grade students participate in chorus and all students also have the opportunity to select a band or orchestra instrument for study in 4<sup>th</sup> grade. Music teachers assist students in selecting an appropriate instrument. Students can continue to participate in large music groups, including chorus, band and orchestra through 12<sup>th</sup> grade. Other opportunities exist for students to play in small chamber ensemble groups. Chamber ensemble groups, Jazz ensembles and a cappella performing groups present day and evening school concerts for community enjoyment.

Courses in elective music are offered to students in grade 9 -12. Course offerings include beginning and advanced theory. High school students receive credit for elective courses and participation in performing music.

Please contact your school’s music teacher if you have questions about concert selections.

## Music Booster Club MAPOB (Music Association of Plainview-Old Bethpage)

The mission of MAPOB is to promote and support music education and related activities in the Plainview-Old Bethpage CSD and community; to promote cooperation among all musicians in the school district; to develop musical skills and the characteristics of good fellowship, self-discipline, and fairness.

Students and community members join together to provide organized support for the music programs in the Plainview-Old Bethpage CSD and community.

Membership is open to all families of students in district schools. This is a wonderful opportunity to show your support and encouragement for your child and music.

## PE, Health, Athletics and Recreation

The K -12 Health and Physical Education is designed to have students learn the skills and concepts necessary to pursue a life of health and fitness, while being in an engaging, fun and safe learning environment. Our high school physical education program is designed to provide students the ability to select various courses of study, which includes courses in Yoga, Dance, Weight Training, team sports, individual sports and fitness.

As students increase their skill development, they have the opportunity to participate in the Interscholastic Athletic Program, which presently consists of more than 90 teams in grades 7 – 12.

Our recreation program includes an intramural program at the middle school level, Friday night recreation for students in grades 5 – 8. Swim Programs are offered for students in our Saturday morning Instructional Swim Program. Saturday afternoon recreational swims are available for the community, while Monday and Wednesday recreational swims are reserved for adults. In addition to these programs we also offer programs for students with disabilities: Funtime, Special Youth and our challenger basketball and soccer programs.

## Athletic Booster Club

The Plainview-Old Bethpage Athletic Booster Club acts as the advocates for the Plainview-Old Bethpage student athlete. They start advocating in the 7<sup>th</sup> grade (the first year for organized school sports), and run through 12<sup>th</sup> grade. Without your input and support they cannot do as much as they wish to.

The group also coordinates events with the school, such as homecoming and BBQ's for various teams, Rose Ceremonies for graduating athletes and the Wall of Fame in the High School hallway.

The club has a highly attended end-of-the-year varsity dinner, where the boosters distribute scholarships and the coaches get to speak about their teams and present All-Class and All-American honors.

Please join the booster club in support of our town's student athletes. Flyers with membership information are sent home each year and meeting dates are listed on the school calendar. If you have questions about the booster club, please email [pobbooster@yahoo.com](mailto:pobbooster@yahoo.com).

## District Publications

Our district publication, *Educational Horizons*, is the official publication of the Board of Education and highlights items of interest in our schools such as: board and budget information and news about staff, students and alumni. It is mailed to district residents and is posted on our school district website.

Student publications abound in the district. Student handbooks, produced by the high school and the two middle schools, offer rules of conduct, regulations, student rights and responsibilities, and other important information. In addition to the senior yearbook published by the high school, the high school and the middle schools publish their own newsletters and literary magazines.

Other brochures describing programs, courses, college requirements and extra-curricular activities are given to students to take home, or are mailed to parents/residents, and are available online at [www.pobschools.org](http://www.pobschools.org).

## Photographs

Photographs and video footage of students are part of the district public relations program and may be included on our school district website. Parental permission is assumed unless the Plainview-Old Bethpage District is contacted in writing by November 1, 2019. Please contact the main office of your child's school with questions and concerns.

## Holocaust/Genocide Studies Center

One of the only centers of its kind to be housed in a school library, the Holocaust/Genocide Center located within John F. Kennedy High School is open to all residents during regular school hours and also by appointment. Materials on the Holocaust and other acts of genocide may be borrowed and include books, videos, survivor testimonies, periodicals and pamphlets of interest to children and adults.

## Our Radio Station (WPOB)

The Plainview-Old Bethpage Central School District operates a radio station, WPOB 88.5 FM, which airs student produced programs that are educational, informational and entertaining. The station will broadcast public service announcements from community organizations. Contact the department at 516-434-3185 for details.

## Senior Citizens

The Plainview-Old Bethpage School District Senior Citizen Club meets weekly on Fridays at 10:00 am in the Jamaica Avenue School (except for school closing days). Transportation is available, within the district, to and from the Senior Citizen Club for the handicapped or other members who may require transportation. For bus transportation call (516) 434-3074.

The Senior Citizen Club provides a friendly social environment. Activities include arts and crafts, card games, dancing, informational programs and speakers, tours and trips. Classes for art and ceramics are available. For information concerning the club, call Cheryl Dender at (516) 434-3124.

## Parent-Teacher Organizations

The Plainview-Old Bethpage School district is generously and faithfully supported by the Parent-Teacher Associations. Thanks to the PTA's dedication to the welfare of children and the cause of public education, this community has had an outstanding record of public support for the highest quality of education for our students.

The PTA Council serves as a coordinating body that unites the efforts of the seven school-based PTAs and SEPTA. Membership of PTA Council is composed of delegates elected by each of these PTAs.

The Parent-Teacher Associations seek to bring together the home, the school, and the community in order to develop the cooperation necessary to secure for every child the highest advantages in physical, mental and social education. The PTAs extend a cordial welcome to all parents to join their membership and attend their meetings which are listed in this calendar.

Special Education Parent-Teacher Association (SEPTA) is a group of concerned people interested in the welfare and education of children with special needs and their families. Anyone with questions or ideas can contact SEPTA members. Everyone is welcome to attend their meetings which are listed in this calendar.



## PTA Council Executive Board, 2019-2020

President	Paula Barsky	516-987-8677
Administrative V.P.	Aliza Greenberg	718-570-6323
Budget/Financial V.P.	Barbi Silverstone	516-942-3617
Procedures/By-Laws V.P.	Ali Kusinitz	516-293-6550
Founders' Day V.P.	Lori Anne Casavina	917-370-0403
Founders' Day V.P.	Eileen Chasan	516-938-7826
Communications V.P.	Sarah Bogaty	516-298-3338
Recording Secretary	Jodi Poggioreale	516-932-5250
Asst. Recording Secretary	Hilary Starr	516-931-1017
Corresponding Secretary	Jennifer Novis	914-772-2523
Asst. Corresponding Sec't	Kristin Pilatsky	516-459-2543
Treasurer	Kim Bell	516-448-1816
Historian	Jennifer Biren	516-293-0037
Past President	Patrice Finkelstein	516-639-4921

## PTA Unit Presidents, 2019-2020

Judy Jacobs-Parkway	Kara Kaplan	516-857-5270
Judy Jacobs-Parkway	Nicole Sacks	516-782-7166
Old Bethpage	Elise Michaels	516-729-8921
Old Bethpage	Ellen Rosenfeld	516-526-9863
Pasadena	Andriana Sideris	516-946-8787
Pasadena	Jaime Vine	516-652-9570
Stratford Road	Marisa Pammer	718-288-9444
Stratford Road	Melody Sherman	808-559-0204
Mattlin MS	Donna Lupia	516-902-2451
POBMS	Amy Jospa	516-220-1160
POBJFK HS	Frann Rappaport	516-578-5792
SEPTA	Marina Bournias	646-591-8273
SEPTA	Paula Barsky	516-987-8677
PTA Council	Paula Barsky	516-987-8677

## Community Organizations

The district has many educational, cultural, social, business and service organizations that provide academic scholarship awards and recognition of student participation. Many memorial scholarships are also offered to outstanding students or to those needing financial aid. A partial list of the community organizations follows:

- Benjamin W. Sofe Memorial
- Brian Harley Assa Memorial
- Brooke Zimmerman Memorial
- Concerned Citizens of the POB Community
- Crestwood Country Day School
- Francis L. Phillips, P.E. Engineering Award
- Frisch Financial Scholarship for Excellence in Finance

- Gieir-Levitt Post No 655 of the Jewish War Veterans of the USA, Inc.
- Harlean Cort Memorial
- Harold Yacker Memorial
- Jamie Purzak Memorial Scholarship
- Janet Baumgarten Memorial
- Jeffrey Miller Memorial
- Jordan Abramowitz Memorial
- Joshua Golbert Memorial Award in Music
- Kevin D. Berkowitz Memorial Scholarship
- L.I. Blood Services
- Leonard & Miriam Berkowitz Memorial
- Linda Lippolt Ray of Sunshine Scholarship
- Lucian Veneziano Memorial Scholarship
- Maury D. Golbert Music Award
- Michael Eichenbaum Award
- Michael Secko Memorial Scholarship
- Music Association of Plainview-Old Bethpage
- Northwell Health/Plainview Hospital Scholarship
- NYU Winthrop Hospital Sports Medicine Award
- Opa Grille Award
- Paul Rubin Memorial
- Plainview Bethpage Lion's Club
- Plainview Diner Award
- Plainview Little League
- Plainview P.A.L. Award
- Plainview-Old Bethpage Chamber of Commerce
- Plainview-Old Bethpage JFK HS PTA
- Plainview-Old Bethpage Senior Citizen Club
- Plainview-Old Bethpage Soccer Club
- POB Athletic Booster Club
- Rae Saltzman Scholarship
- Rechler Equity Partners Scholarship
- Residents Against Garbage Expansion (RAGE)
- Rinaldi Scholarship Fund
- Ruth Gaipman Memorial
- Scholar Athlete Legacy Award from the "Boys of '69"
- SCOPE Education Services Scholarship
- SEPTA Scholarship Award
- Spencer Cares Scholarships
- Stacy's Warriors Scholarships
- Stephanie Handschu Music Memorial Scholarship
- Steven Pollicino Memorial
- Swimmer-Scholar Award
- The Mark Koehler Scholarship
- Trio Hardware Award

## Plainview-Old Bethpage Public Library - Your Partner in Learning

**Read Learn Explore** at the Plainview-Old Bethpage Public Library! We excel at helping students locate, evaluate and utilize information effectively. Providing the school community with a wealth of electronic and print information along with a wide array of services for education and entertainment is what we do best!

## **FREE with your Library Card:**

- Download the app for best-selling e-books and audio books
- Stream or download music
- Browse online magazines
- Use the online tutoring service through Tutor.com
- Quiet Study Rooms
- Museum Passes
- Participate in an Exercise Class, Craft Program or Book Discussion Group
- Enjoy concerts and lectures
- Utilize electronic tools for book reports and research papers

**Library Card Applications** are available in the Library or from our website, [www.poblib.org](http://www.poblib.org). Download your library barcode to your phone and leave your card at home!

*Notary, fax and copy services are available.*

Library Hours: Monday–Friday 9:00am – 9:00pm  
Saturday 9:30am – 5:30pm  
Sunday 1:00pm – 9:00pm

## **PLAINVIEW-OLD BETHPAGE PUBLIC LIBRARY**

999 Old Country Road, Plainview, NY 11803  
(516) 938-0077 (T) (516) 433-4645 (F)  
[www.poblib.org](http://www.poblib.org)

*The Library is fully handicapped accessible.*

## **Questions and Concerns**

Should you have questions or concerns about your child's school work, please contact and have discussion with the classroom or subject area teacher as he/she will have more detailed information for you. If you need to share information not pertaining to the classroom instruction or assignments; or, if you have been unsuccessful in resolving a concern with your child's teacher, please contact one of the following: department chairperson, guidance counselor, or principal. Please refer to the District's Chain of Communication document on the following page for more information.

# Chain of Communication

## Students

We encourage ALL students to express their questions and concerns directly to their teacher and/or guidance counselor or social worker.

## Parents

If you are concerned about an issue involving your child's education, experience, or teacher, go directly to the teacher.

## Contacting the Teacher

Teachers are available to communicate with students and parents. You can call the school building of your child between the hours of 7:30 am and 4:00 pm, and leave a detailed message for the teacher indicating times in which you can be reached. You can also email your child's teacher with any questions or concerns you may have.

## Contacting the Guidance Counselor or Social Worker

If your concerns stem from your child's social/emotional well-being, or the progress in a particular class, please contact the school guidance counselor and/or social worker. These professionals are available between the hours of 7:30 am and 4:00 pm.

*In the event that additional clarification is necessary, or if you have not heard back from the teacher within 48 hours (Monday-Friday) by way of phone or email, please use the following chain of communication for further assistance.*

## ELEMENTARY SCHOOLS

### School Building Assistant Principals

If your concerns stem from your child's social/emotional well-being, progress, behavior, class assignment or grades, please contact the school building Assistant Principal.

## MIDDLE SCHOOLS & HIGH SCHOOL

### School Building Assistant Principals

If your concerns stem from your child's behavior, participation in school, absences, or disciplinary issues, please contact the school building Assistant Principal.

### Curriculum Chairs/Directors

If your concerns stem from a classroom practice, grade, or a particular book or assignment, please contact the administrator who oversees the curricular area in question.

## Building Principals

Most problems will have been resolved by this point. If you still need to speak with someone about the situation, however, please contact the school building Principal.

*All calls to the Principal or Assistant Principals are maintained in a telephone log.*

## Assistant Superintendents

If your problem has not been resolved through the Principal's office, please contact the appropriate Assistant Superintendent.

- Assistant Superintendent for Business
- Assistant Superintendent for Human Resources
- Assistant Superintendent for Curriculum and Instruction
- Assistant Superintendent for Student Services and Safety

## Superintendent of Schools

If your problem has not been resolved through the Assistant Superintendent's offices, please contact the Superintendent of Schools.

## Board of Education

If your problem has not been resolved by speaking with the Superintendent of Schools, please contact the Board of Education through the District Clerk.

## District Directory (516) 434-3000

### Plainview-Old Bethpage John F. Kennedy H.S.

50 Kennedy Drive, Plainview  
James Murray, Principal  
Diana Beltrani, Assistant Principal  
Philip Farrelly, Assistant Principal  
Eric Haruthunian, Assistant Principal  
Attendance Office 434-3147 Main Office 434-3125  
Guidance 434-3150 Nurse 434-3210

### Plainview-Old Bethpage Middle School

121 Central Park Road, Plainview  
Alice Bowman, Principal  
Dorothy Drexel, Kerry Farrell, Assistant Principals  
First Alert 434-3344 Main Office 434-3308  
Guidance 434-3324 Nurse 434-3318

### H.B. Mattlin Middle School

100 Washington Avenue, Plainview  
Dr. Joseph Coladonato, Principal  
Dr. Regina M. Buck, Thomas Schwartz, Assistant Principals  
First Alert 434-3259 Main Office 434-3250  
B House 434-3266 C House 434-3282  
D House 434-3292 Nurse 434-3253

### Stratford Road Elementary School

33 Bedford Road, Plainview  
Dr. Alison Clark, Principal  
Lynn Winters, Assistant Principal  
First Alert 434-3405 Main Office 434-3389  
Nurse 434-3397

### Old Bethpage Elementary School

1159 Round Swamp Road, Old Bethpage  
Suzanne Gray, Principal  
Kristin Seidel, Assistant Principal  
First Alert 434-3437 Main Office 434-3419  
Nurse 434-3428

### Judy Jacobs-Parkway Elementary School

300 Manetto Hill Road, Plainview  
Gregory Scesney, Principal  
Joanna Clampitt, Assistant Principal  
First Alert 434-3375 Main Office 434-3358  
Nurse 434-3362

### Pasadena Elementary School

3 Richard Court, Plainview  
Karen Heitner, Principal  
Jodi Marchese, Assistant Principal  
First Alert 434-3467 Main Office 434-3451  
Nurse 434-3459

## 2019-2020 School Hours

**POBJFK High School** 7:25am-1:49pm  
Extra Help (M-Th) 1:49pm-2:29pm  
Extra Curricular/Clubs 2:29pm-3:09pm  
**H.B. Mattlin Middle School** 8:40am-2:50pm  
Extra Help/Curricular 2:54pm-3:35pm  
**Plainview-Old Bethpage Middle School** 8:40am-2:50pm  
Extra Help/Curricular 2:54pm-3:35pm  
**Grades K-4 All Schools** 9:20am-3:20pm

## Administrative Offices

Superintendent of Schools  
Dr. Lorna R. Lewis .....434-3001  
Assistant Superintendent for Human Resources  
Dr. Vincent K. Mulieri .....434-3040  
Assistant Superintendent for Business  
Richard J. Cunningham .....434-3050  
Assistant Superintendent for Curriculum & Instruction  
Dr. Mary T. O'Meara .....434-3010  
Assistant Superintendent for Student Services & Safety  
Christopher T. Donarummo .....434-3074  
Director of Pupil Personnel Services  
Dolores Espinosa .....434-3020  
Asst. Directors of Pupil Personnel Services  
Jennifer Lott Gr. K-4 .....434-3020  
Meredythe Alliegro Gr. 5-8 .....434-3020  
Sandra Parmentier Gr. 9-12 .....434-3020  
Director of Guidance  
Laurie Lynn .....434-3150  
Director of Phys. Ed., Athletics & Recreation/Health  
Joseph Braico .....434-3100  
Director of Art and Digital Instruction  
Dr. Ben Wiley .....434-3014  
Director of Music  
Michael Rodgers .....434-3283  
Director of Technology  
Dr. Guy A. Lodico .....434-3090  
Director of Facilities & Operations  
Andrew Ward .....434-3110  
Transportation Supervisor  
Philip Schlener .....434-3075

## Emergency School Closings

In the event that schools are closed or delayed in opening because of inclement weather or other emergency, the following radio and TV stations will be notified and will make announcements, usually from 7:00am to 9:00am.

WCBS WBAB WKJY WHLI FIOS 1  
WALK WINS WGBB Cablevision Ch. 12

## Delayed School Openings

(Inclement Weather or Emergency Conditions)

In the event of inclement weather or emergency conditions, the Superintendent of Schools determines whether schools will be closed or there will be a delayed opening of schools.

If it is determined that conditions will improve sufficiently to allow for the arrival of staff and students, the Superintendent may authorize a two-hour (or three-hour) delay in the start of the school day. This alternative to closing schools permits greater flexibility in meeting the 183 day minimum session requirement.

A delayed opening schedule means the following:

1. Classes will start later than normal (see details below) and transportation will be provided two or three hours later than the normal pickup for all district and private schools.
2. Staff, with the exception of Buildings and Grounds and custodial personnel, will report as soon after normal arrival time as possible, but no later than the delayed starting times noted below.
3. In the event of a delayed opening, parents and staff will be notified via School Messenger.

School	Regular Start Time	2-Hour Delayed Start Time	3-Hour Delayed Start Time
POBJFK	7:25am	9:25am	10:25am
MMS	8:40am	10:40am	11:40am
POBMS	8:40am	10:40am	11:40am
OB	9:20am	11:20am	12:20pm
PAS	9:20am	11:20am	12:20pm
JJP	9:20am	11:20am	12:20pm
SR	9:20am	11:20am	12:20pm

### Early Dismissal Schedule:

School	Plan A: (Non-Emergency)	Plan B: (Emergency)
	Early Dismissal	Early Dismissal
POBJFK	11:05am	9:40am
MMS	12:05pm	10:40am
POBMS	12:05pm	10:40am
OB	1:05 pm	11:40am
PAS	1:05 pm	11:40am
JJP	1:05 pm	11:40am
SR	1:05 pm	11:40am





## Religious Holidays <sup>®</sup>

August 31, 2019- Muharram  
 September 2, 2019- Ganesh Chaturthi  
 September 9-10, 2019- Ashura  
 September 29-October 1, 2019- Rosh Hashanah  
 September 29-October 8, 2019 Navaratri  
 October 8, 2019- Dussehra  
 October 8-9, 2019- Yom Kippur  
 October 13-20, 2019- Sukkot  
 October 20-22, 2019- Shemini Atzeret  
 October 21-22, 2019- Simchat Torah  
 October 27, 2019- Diwali  
 November 1, 2019- All Saints' Day  
 November 2, 2019- All Souls Day  
 November 9, 2019- The Prophet's Birthday  
 December 1, 2019- Advent- Christian  
 December 6, 2019- St. Nicholas Day  
 December 8, 2019-The Immaculate Conception  
 December 22-30, 2019- Chanukah  
 December 25, 2019- Christmas Day  
 January 6, 2020- Epiphany  
 January 7, 2020- Orthodox Christmas Day  
 January 14, 2020- Orthodox New Year  
 January 15, 2020- Makar Sankranti  
 January 25, 2020- Lunar New Year  
 February 9-10, 2020- Tu B'Shevat  
 February 21, 2020 Maha Shivarati  
 February 25, 2020- Mardi Gras  
 February 26, 2020- Ash Wednesday  
 February 26, 2020- Lent  
 March 9-10, 2020- Purim  
 March 9-10, 2020- Holi  
 March 21-22, 2020- Isra and Mi'raj  
 April 2, 2020- Rama Navami  
 April 5, 2020- Palm Sunday  
 April 8-9, 2020- Laylat al Bara'at  
 April 8-16, 2020- Passover  
 April 9, 2020- Maundy Thursday  
 April 10, 2020- Good Friday  
 April 11, 2020 - Holy Saturday  
 April 12, 2020- Easter  
 April 17, 2020- Orthodox Good Friday  
 April 19, 2020- Orthodox Easter  
 April 23, 2020- Ramadan  
 May 11-12, 2020- Lag B'Omer  
 May 19, 2020- Laylat al Qadr  
 May 21, 2020- Ascension Day  
 May 23-24, 2020- Eid al-Fitr  
 May 28-30, 2020- Shavuot  
 May 31, 2020 - Pentecost  
 June 1, 2020- Whit Monday  
 June 11, 2020- Corpus Christi





Plainview-Old Bethpage Central School District  
Plainview, New York 11803  
[www.pobschools.org](http://www.pobschools.org)

*Excellence in Education*

Non-Profit  
Organization  
U.S. Postage  
PAID  
Hicksville, N.Y.  
Permit 156

\*\*\*\*\*ECRWSS\*\*  
RESIDENT OF  
PLAINVIEW-OLD BETHPAGE SCHOOL DISTRICT

